



2801 Wehrle Dr., Suite 8
Williamsville, NY 14221

T 716.204.9543
TRCcompanies.com

December 18, 2019

Sharon Airport- K31
Attn: Logan Pomella, Manager: Sharon Air Park Inc.
P.O. Box 447
Sharon Springs, NY 13459-0447

**Subject: Case 17-F-0599
East Point Energy Center, LLC
East Point Energy Center Project
Town of Sharon, Schoharie County, New York
Information Request**

Dear Mr. Pomella,

East Point Energy Center, LLC is proposing the development of a solar energy center in the Town of Sharon in Schoharie County, New York. East Point Energy Center, LLC submitted an application to the NYS Board on Electric Generation Siting and the Environment in pursuit of a Certificate of Environmental Compatibility and Public Need on September 26, 2019, to construct the East Point Energy Center (the Project) under Article 10 of the Public Service Law (PSL).

East Point Energy Center, LLC is proposing to construct an approximately 50-megawatt solar photovoltaic array system located on land leased or purchased from owners of private property. The Project Area is illustrated on the attached map (Figure 1), along with a figure showing the Sharon Airport in proximity to the proposed solar array locations and the civil airport imaginary surface notice criteria per 14 CFR Part 77.19 (Figure 2). Proposed components within the Project Area will include commercial-scale solar arrays, access roads, inverters, fencing, buried electric collection lines, and electrical interconnection facilities. The maximum height of the solar arrays will be 12' above ground level and the nearest array is proposed approximately 1,600 feet away from the runway. The Project is scheduled for construction in late 2020/early 2021. Additional information about the Project can be found on the Project website at eastpointenergycenter.com.

As part of the State's application review process and 16 NYCRR §1001.25(f)(2), the Applicant is required to consult with local airports and to submit a Notice of Proposed Construction to the Federal Aviation Administration (FAA) to assess any potential effects on airport navigation and operation. TRC, on behalf of East Point Energy Center, LLC, is requesting your review and comment on the construction of the Project as it relates to operation of the Sharon Airport. This review will aid in the Article 10 application process.

If you have any questions regarding the Project or the request herein, please contact me at TRC by calling (716) 221-4037 or via email at RSilva@trccompanies.com.

Sincerely,

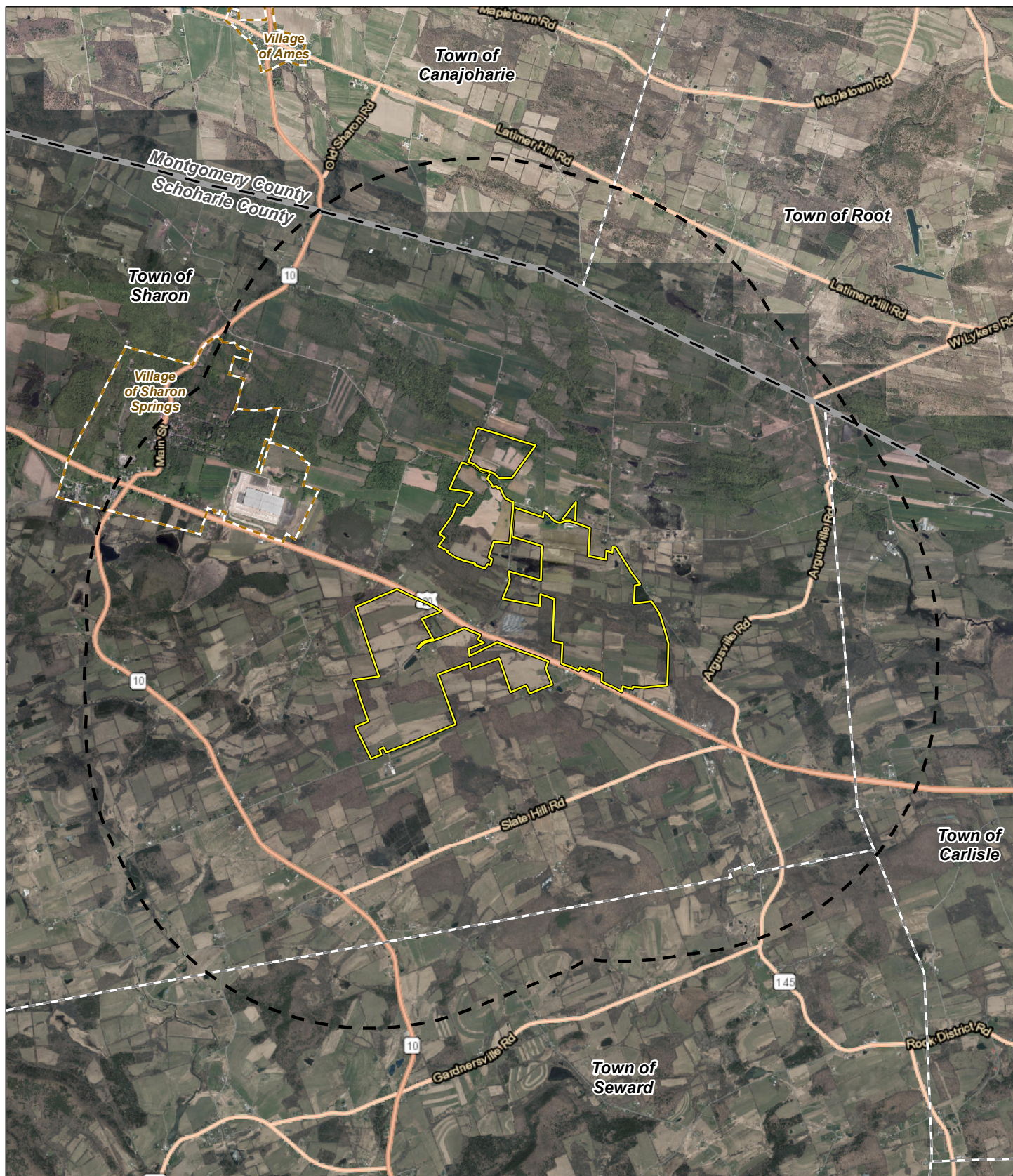
Rachel Silva
Project Manager

cc: Bill Boer, NextEra Energy Resources, LLC
Kris Scornavacca, NextEra Energy Resources, LLC
Samantha Kranes, TRC

Enclosures: Figure 1: Site Location Map
Figure 2: Civil Airport Imaginary Surface Notice Criteria



Figure 1: Site Location Map

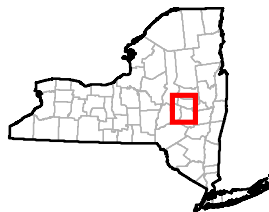


- Project Area
- 2-Mile Study Area
- Village Boundary
- Municipal Boundary
- County Boundary

Base Map: NYS Office of Information Technology Services,
GIS Program Office, 2018; Esri and its contributors



MAP LOCATION



PROJECT AREA AND STUDY AREA
EAST POINT
ENERGY CENTER, LLC
TOWN OF SHARON, NY

FIGURE 1

DECEMBER 2019

Map Produced by

Figure 2: Civil Airport Imaginary Surface Notice Criteria

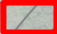
0 1000 2000 ft

East Point Solar Project

14 CFR Part 77.19 Notice Criteria

Plot Date: 11 December 2019

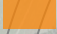

Coordinate System: NAD83 / UTM zone 18N

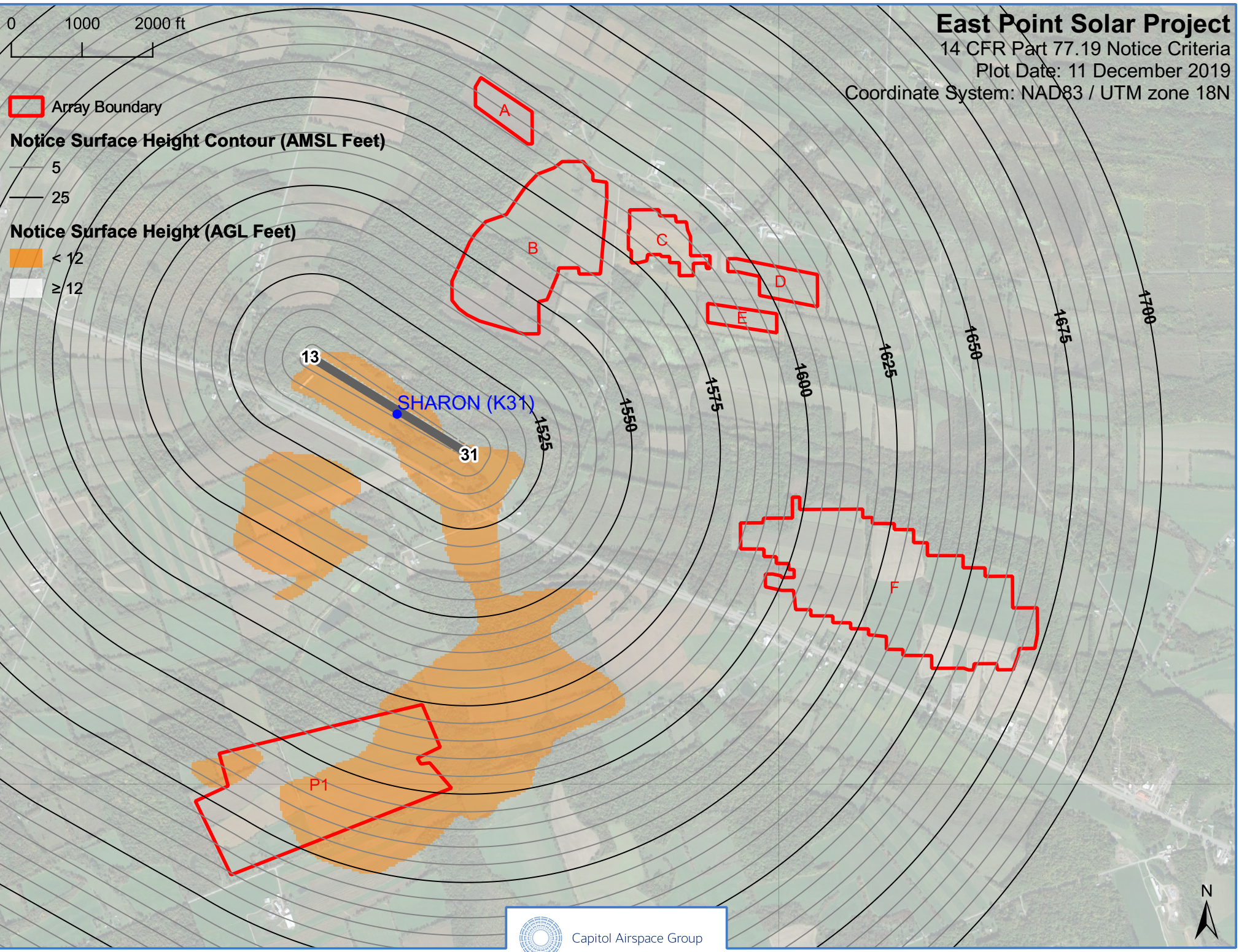
 Array Boundary

Notice Surface Height Contour (AMSL Feet)

— 5
— 25

Notice Surface Height (AGL Feet)

 < 12
 ≥ 12



Capitol Airspace Group