



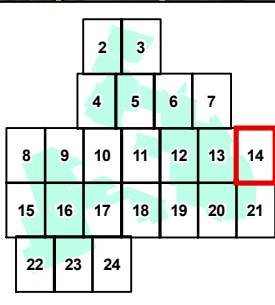
Legend	Proposed Facility Components	MAP LOCATION	PROJECT COMPONENT LOCATIONS
Project Area	Buried Collector Line		EAST POINT ENERGY CENTER, LLC
Adjacent Parcel	Fence		TOWN OF SHARON, NY
	Infiltration Trench		SHEET 13 OF 24
	PV Panel Array		
	Inverter		
	HDD Location		
	Access Road		
<p>0 100 200 Feet</p> <p>North Arrow</p> <p>Data: CanAcre, 2018, Schoharie County GIS, 2018 Base Map: NYS Office of Information Technology Services, GIS Program Office, 2018; Esri and its contributors</p>			
			FIGURE 3-1
			SEPTEMBER 2019
			Map Produced by



Project Area
 Adjacent Parcel

0 100 200 Feet

Data: CanAcre, 2018, Schoharie County GIS, 2018
Base Map: NYS Office of Information Technology Services,
GIS Program Office, 2018; Esri and its contributors



MAP LOCATION



PROJECT COMPONENT LOCATIONS
EAST POINT ENERGY CENTER, LLC
TOWN OF SHARON, NY
SHEET 14 OF 24

FIGURE 3-1 SEPTEMBER 2019

Map Produced by TRC



Project Area

Adjacent Parcel

0

100

200

Feet

N

2

3

4

5

6

7

8

9

10

11

12

13

14

15

16

17

18

19

20

21

22

23

24

MAP LOCATION

NEXTERA[®]

ENERGY

RESOURCES

PROJECT COMPONENT LOCATIONS

EAST POINT ENERGY CENTER, LLC

TOWN OF SHARON, NY

SHEET 15 OF 24

FIGURE 3-1

SEPTEMBER 2019

Map Produced by

Data: CanAcre, 2018; Schoharie County GIS, 2018
Base Map: NYS Office of Information Technology Services,
GIS Program Office, 2018; Esri and its contributors



Project Area

Adjacent Parcel

Proposed Facility Components

x

Fence

PV Panel Array

0

100

200

Feet

2

3

4

5

6

7

8

9

10

11

12

13

14

15

16

17

18

19

20

21

22

23

24

MAP LOCATION

New York

NEXTERA[®]

ENERGY

RESOURCES

PROJECT COMPONENT LOCATIONS

EAST POINT ENERGY CENTER, LLC

TOWN OF SHARON, NY

SHEET 16 OF 24

FIGURE 3-1

SEPTEMBER 2019

Map Produced by

TRC



Project Area

Adjacent Parcel

Buried Collector Line

X -

Fence

PV Panel Array

0

100

200

Feet

N

2

3

4

5

6

7

8

9

10

11

12

13

14

15

16

17

18

19

20

21

22

23

24

17

MAP LOCATION

New York

NEXTERA[®]

ENERGY

RESOURCES

PROJECT COMPONENT LOCATIONS

EAST POINT ENERGY CENTER, LLC

TOWN OF SHARON, NY

SHEET 17 OF 24

FIGURE 3-1

SEPTEMBER 2019

Map Produced by

TRC

Data: CanAcre, 2018, Schoharie County GIS, 2018
Base Map: NYS Office of Information Technology Services,
GIS Program Office, 2018; Esri and its contributors



Project Area

Adjacent Parcel

Proposed Facility Components

Buried Collector Line

0

100

200

Feet

N

2

3

4

5

6

7

8

9

10

11

12

13

14

15

16

17

18

19

20

21

22

23

24

MAP LOCATION

New York

NEXTERA[®]

ENERGY

RESOURCES

PROJECT COMPONENT LOCATIONS

EAST POINT ENERGY CENTER, LLC

TOWN OF SHARON, NY

SHEET 18 OF 24

FIGURE 3-1

SEPTEMBER 2019

Map Produced by

TRC

Data: CanAcre, 2018, Schoharie County GIS, 2018

Base Map: NYS Office of Information Technology Services,

GIS Program Office, 2018; Esri and its contributors



Project Area

Adjacent Parcel

Buried Collector Line

X -

Fence

Infiltration Trench

PV Panel Array

Inverter

Access Road

Laydown Yard

0100200

Feet

North Arrow

23

4567

891011121314

15161718192021

222324

19

MAP LOCATION

NEXTERA[®]

ENERGY

RESOURCES

PROJECT COMPONENT LOCATIONS

EAST POINT ENERGY CENTER, LLC

TOWN OF SHARON, NY

SHEET 19 OF 24

FIGURE 3-1

SEPTEMBER 2019

Map Produced by

TRC

Data: CanAcre, 2018, Schoharie County GIS, 2018
Base Map: NYS Office of Information Technology Services,
GIS Program Office, 2018; Esri and its contributors



Project Area

Adjacent Parcel

Buried Collector Line

x -

Fence

Infiltration Trench

PV Panel Array

Inverter

HDD Location

Access Road

Laydown Yard

0

100

200

Feet

N

Data: CanAcre, 2018, Schoharie County GIS, 2018

Base Map: NYS Office of Information Technology Services, GIS Program Office, 2018; Esri and its contributors

2

3

4

5

6

7

8

9

10

11

12

13

14

15

16

17

18

19

20

21

22

23

24

MAP LOCATION

NEXTERA[®]

ENERGY

RESOURCES

PROJECT COMPONENT LOCATIONS

EAST POINT ENERGY CENTER, LLC

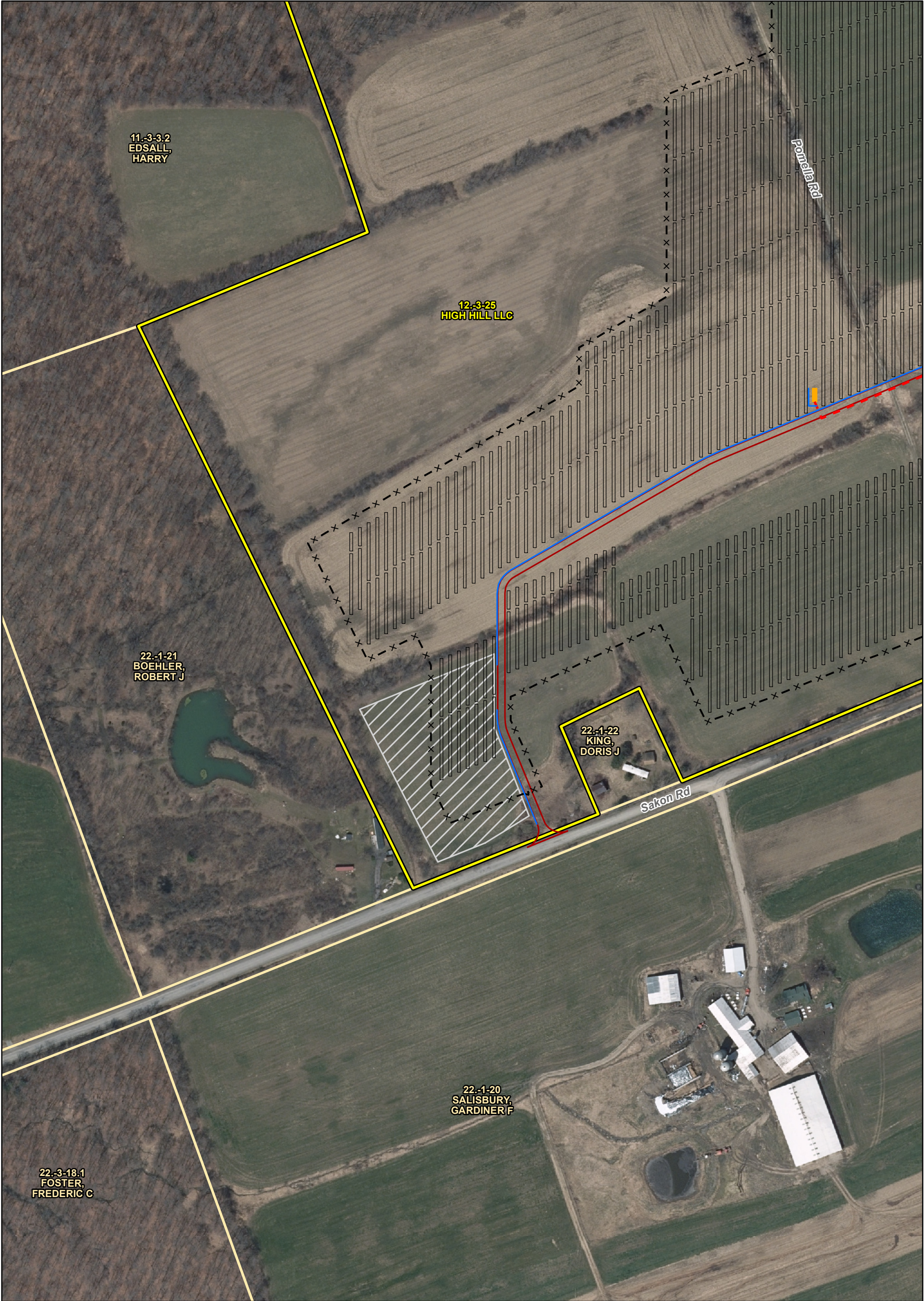
TOWN OF SHARON, NY

SHEET 20 OF 24

FIGURE 3-1

SEPTEMBER 2019

Map Produced by



Project Area

Adjacent Parcel

Buried Collector Line

x

Fence

Infiltration Trench

PV Panel Array

Inverter

Access Road

Laydown Yard

0100200

Feet

22

23

24

2

3

4

5

6

7

8

9

10

11

12

13

14

15

16

17

18

19

20

21

MAP LOCATION

New York

NEXTERA[®]

ENERGY

RESOURCES

PROJECT COMPONENT LOCATIONS

EAST POINT ENERGY CENTER, LLC

TOWN OF SHARON, NY

SHEET 22 OF 24

FIGURE 3-1

SEPTEMBER 2019

Map Produced by

TRC



Project Area

Adjacent Parcel

Buried Collector Line

x

Fence

Infiltration Trench

PV Panel Array

Inverter

Access Road

0

100

200

Feet

N

2

3

4

5

6

7

8

9

10

11

12

13

14

15

16

17

18

19

20

21

22

23

24

MAP LOCATION

New York

NEXTERA[®]
ENERGY
RESOURCES

PROJECT COMPONENT LOCATIONS
EAST POINT ENERGY CENTER, LLC
TOWN OF SHARON, NY
SHEET 23 OF 24

FIGURE 3-1

SEPTEMBER 2019

Map Produced by

TRC



Project Area

Adjacent Parcel

Proposed Facility Components

Buried Collector Line

0

100

200

Feet

N

Data: CanAcre, 2018, Schoharie County GIS, 2018

Base Map: NYS Office of Information Technology Services,

GIS Program Office, 2018; Esri and its contributors

2

3

4

5

6

7

8

9

10

11

12

13

14

15

16

17

18

19

20

21

22

23

24

MAP LOCATION

New York

NEXtera[®]

ENERGY

RESOURCES

PROJECT COMPONENT LOCATIONS

EAST POINT ENERGY CENTER, LLC

TOWN OF SHARON, NY

SHEET 24 OF 24

FIGURE 3-1

SEPTEMBER 2019

Map Produced by

TRC