

<b>Legend</b>	<b>Proposed Facility Components</b>	<b>Access Road</b>	<b>MAP LOCATION</b>	<b>NEXTERA ENERGY RESOURCES</b>	
Project Area	Buried Collector Line	Access Road		<b>PROJECT COMPONENT LOCATIONS</b> <b>EAST POINT ENERGY CENTER, LLC</b> <b>TOWN OF SHARON, NY</b> <b>SHEET 1 OF 24</b>	
Adjacent Parcel	Fence	Laydown Yard			<b>FIGURE 3-1</b>
	Interconnection Lines	Figure Index			<b>SEPTEMBER 2019</b>
	Substation/Switchyard				Map Produced by
	PV Panel Array				
	Inverter				

Data: TRC 2017-2019; Base Map: NYS Office of Information Technology Services, GIS Program Office, 2018

0 750 1,500 Feet





Project Area

Adjacent Parcel

Buried Collector Line

x

Fence

Infiltration Trench

PV Panel Array

Inverter

Access Road

Laydown Yard

0100200

Feet

23

24

22

15

16

17

18

19

20

21

8

9

10

11

12

13

14

4

5

6

7

2

3

MAP LOCATION

New York

NEXTERA<sup>®</sup>

ENERGY

RESOURCES

PROJECT COMPONENT LOCATIONS

EAST POINT ENERGY CENTER, LLC

TOWN OF SHARON, NY

SHEET 2 OF 24

FIGURE 3-1

SEPTEMBER 2019

Map Produced by

TRC

Data: CanAcre, 2018, Schoharie County GIS, 2018

Base Map: NYS Office of Information Technology Services,

GIS Program Office, 2018; Esri and its contributors





Project Area

Adjacent Parcel

Buried Collector Line

Infiltration Trench

Access Road

Laydown Yard

0

100

200

Feet

N

2

3

4

5

6

7

8

9

10

11

12

13

14

15

16

17

18

19

20

21

22

23

24

MAP LOCATION

NEXTERA<sup>®</sup>

ENERGY

RESOURCES

PROJECT COMPONENT LOCATIONS

EAST POINT ENERGY CENTER, LLC

TOWN OF SHARON, NY

SHEET 3 OF 24

FIGURE 3-1

SEPTEMBER 2019

Map Produced by

Data: CanAcre, 2018, Schoharie County GIS, 2018

Base Map: NYS Office of Information Technology Services,

GIS Program Office, 2018; Esri and its contributors





Project Area

Adjacent Parcel

Buried Collector Line

x

Fence

Infiltration Trench

PV Panel Array

Inverter

Access Road

0

100

200

Feet

N

2

3

4

5

6

7

8

9

10

11

12

13

14

15

16

17

18

19

20

21

22

23

24

MAP LOCATION

New York

NEXTERA<sup>®</sup>

ENERGY

RESOURCES

PROJECT COMPONENT LOCATIONS

EAST POINT ENERGY CENTER, LLC

TOWN OF SHARON, NY

SHEET 4 OF 24

FIGURE 3-1

SEPTEMBER 2019

Map Produced by

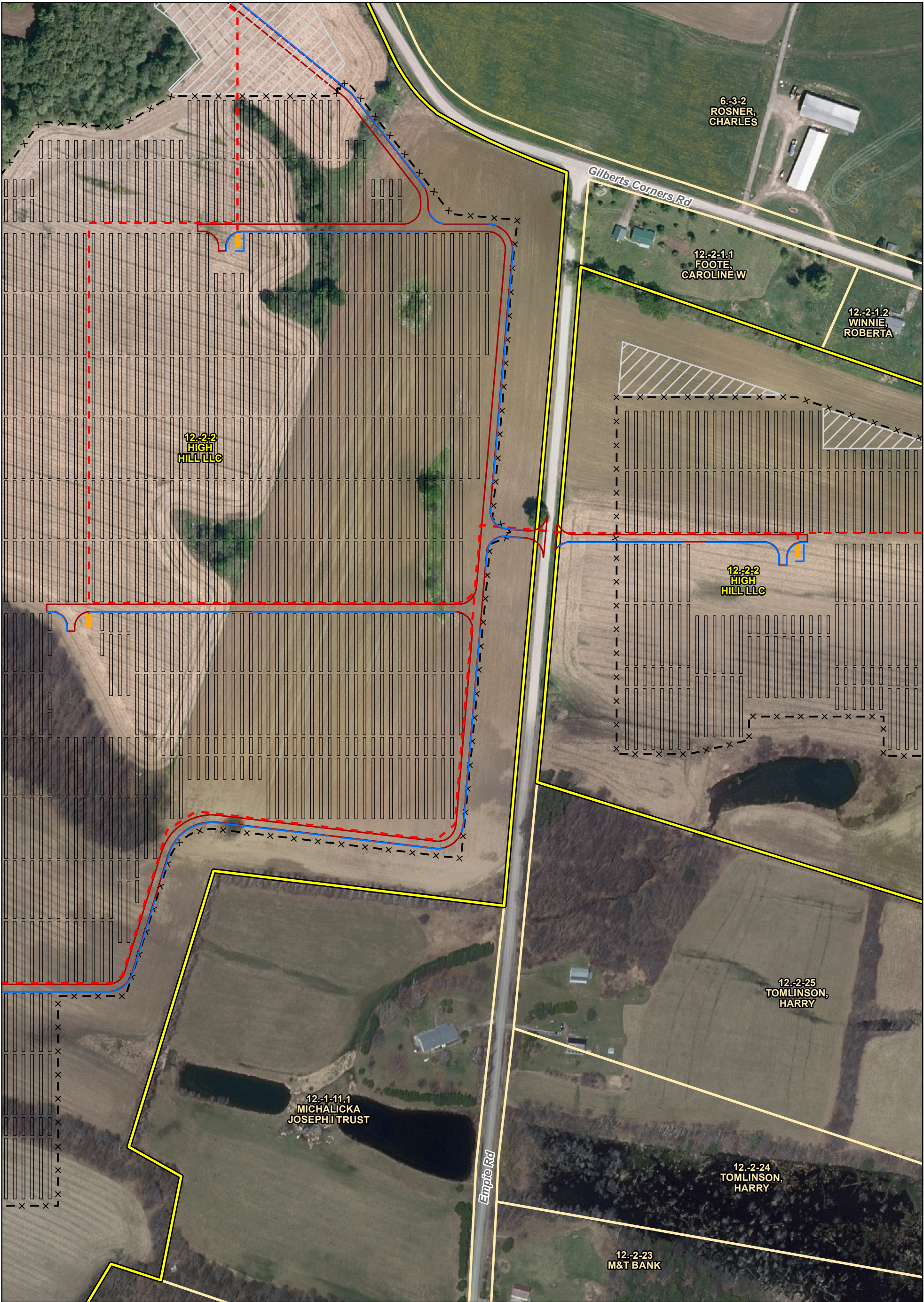
TRC

Data: CanAcre, 2018, Schoharie County GIS, 2018

Base Map: NYS Office of Information Technology Services,

GIS Program Office, 2018; Esri and its contributors





Project Area

Adjacent Parcel

Buried Collector Line

Fence

Infiltration Trench

PV Panel Array

Inverter

Access Road

Laydown Yard

0

100

200

Feet

N

2

3

4

5

6

7

8

9

10

11

12

13

14

15

16

17

18

19

20

21

22

23

24

New York

NEXTERA

ENERGY

RESOURCES

PROJECT COMPONENT LOCATIONS

EAST POINT ENERGY CENTER, LLC

TOWN OF SHARON, NY

SHEET 5 OF 24

FIGURE 3-1

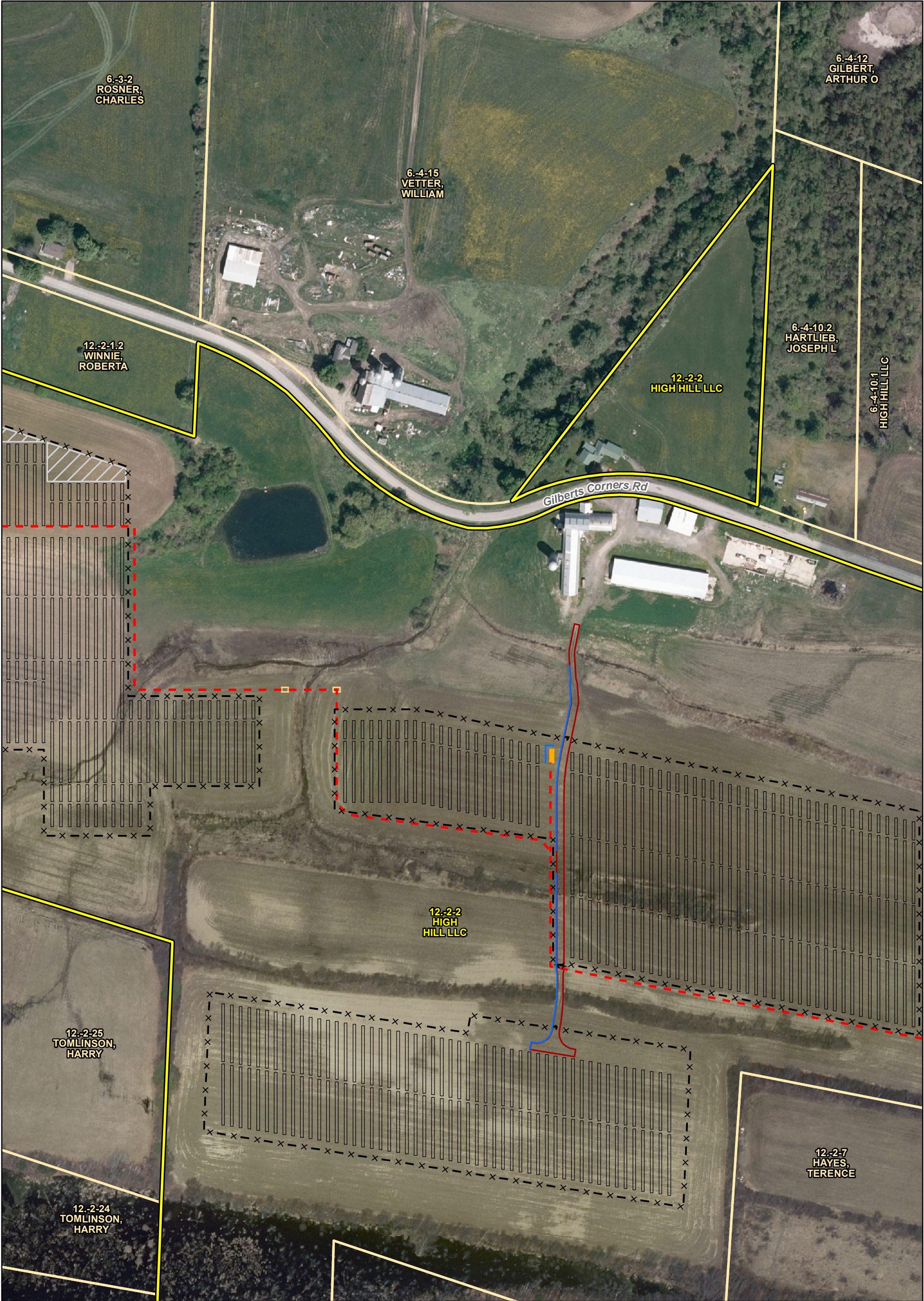
SEPTEMBER 2019

Map Produced by

TRC

Data: CanAcre, 2018, Schoharie County GIS, 2018  
Base Map: NYS Office of Information Technology Services,  
GIS Program Office, 2018; Esri and its contributors





Project Area

Adjacent Parcel

Buried Collector Line

x -

Fence

Infiltration Trench

PV Panel Array

Inverter

HDD Location

Access Road

Laydown Yard

0

100

200

Feet

N

2

3

4

5

6

7

8

9

10

11

12

13

14

15

16

17

18

19

20

21

22

23

24

New York

MAP LOCATION

New York

NEXtera<sup>®</sup>

ENERGY

RESOURCES

PROJECT COMPONENT LOCATIONS

EAST POINT ENERGY CENTER, LLC

TOWN OF SHARON, NY

SHEET 6 OF 24

FIGURE 3-1

SEPTEMBER 2019

Map Produced by

TRC





Project Area

Adjacent Parcel

Buried Collector Line

x

Fence

PV Panel Array

0100200

Feet

Data: CanAcre, 2018, Schoharie County GIS, 2018

Base Map: NYS Office of Information Technology Services,

GIS Program Office, 2018; Esri and its contributors

23

4567

891011121314

15161718192021

222324

7

MAP LOCATION

NEXTERA<sup>®</sup>

ENERGY

RESOURCES

PROJECT COMPONENT LOCATIONS

EAST POINT ENERGY CENTER, LLC

TOWN OF SHARON, NY

SHEET 7 OF 24

FIGURE 3-1

SEPTEMBER 2019

Map Produced by

TRC





Project Area

Adjacent Parcel

0

100

200

Feet

2

3

4

5

6

7

8

9

10

11

12

13

14

15

16

17

18

19

20

21

22

23

24

MAP LOCATION

NEXTERA<sup>®</sup>

ENERGY

RESOURCES

PROJECT COMPONENT LOCATIONS

EAST POINT ENERGY CENTER, LLC

TOWN OF SHARON, NY

SHEET 8 OF 24

FIGURE 3-1

SEPTEMBER 2019

Map Produced by

Data: CanAcre, 2018, Schoharie County GIS, 2018

Base Map: NYS Office of Information Technology Services,

GIS Program Office, 2018; Esri and its contributors





Project Area

Adjacent Parcel

0

100

200

Feet

2

3

4

5

6

7

8

9

10

11

12

13

14

15

16

17

18

19

20

21

22

23

24

MAP LOCATION

NEXTERA<sup>®</sup>

ENERGY

RESOURCES

PROJECT COMPONENT LOCATIONS

EAST POINT ENERGY CENTER, LLC

TOWN OF SHARON, NY

SHEET 9 OF 24

FIGURE 3-1

SEPTEMBER 2019

Map Produced by



Data: CanAcre, 2018, Schoharie County GIS, 2018

Base Map: NYS Office of Information Technology Services,

GIS Program Office, 2018; Esri and its contributors

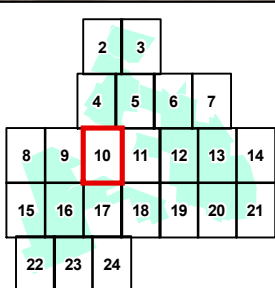




 Project Area  
 Adjacent Parcel

0 100 200 Feet

Data: CanAcre, 2018, Schoharie County GIS, 2018  
Base Map: NYS Office of Information Technology Services,  
GIS Program Office, 2018; Esri and its contributors




MAP LOCATION





**PROJECT COMPONENT LOCATIONS**  
**EAST POINT ENERGY CENTER, LLC**  
**TOWN OF SHARON, NY**  
**SHEET 10 OF 24**

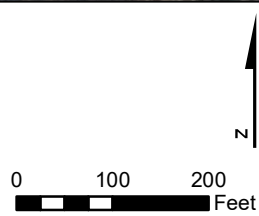
FIGURE 3-1 SEPTEMBER 2019

Map Produced by 

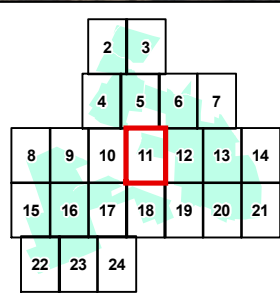




 Project Area  
 Adjacent Parcel



Data: CanAcre, 2018, Schoharie County GIS, 2018  
Base Map: NYS Office of Information Technology Services,  
GIS Program Office, 2018; Esri and its contributors




MAP LOCATION



**PROJECT COMPONENT LOCATIONS**  
**EAST POINT ENERGY CENTER, LLC**  
**TOWN OF SHARON, NY**  
**SHEET 11 OF 24**

FIGURE 3-1 SEPTEMBER 2019

Map Produced by 





Project Area

Adjacent Parcel

Buried Collector Line

x -

Fence

Infiltration Trench

PV Panel Array

Inverter

HDD Location

Access Road

0

100

200

Feet

N

2

3

4

5

6

7

8

9

10

11

12

13

14

15

16

17

18

19

20

21

22

23

24

MAP LOCATION

NEXtera<sup>®</sup>

ENERGY

RESOURCES

PROJECT COMPONENT LOCATIONS

EAST POINT ENERGY CENTER, LLC

TOWN OF SHARON, NY

SHEET 12 OF 24

FIGURE 3-1

SEPTEMBER 2019

Map Produced by

Data: CanAcre, 2018, Schoharie County GIS, 2018

Base Map: NYS Office of Information Technology Services,

GIS Program Office, 2018; Esri and its contributors