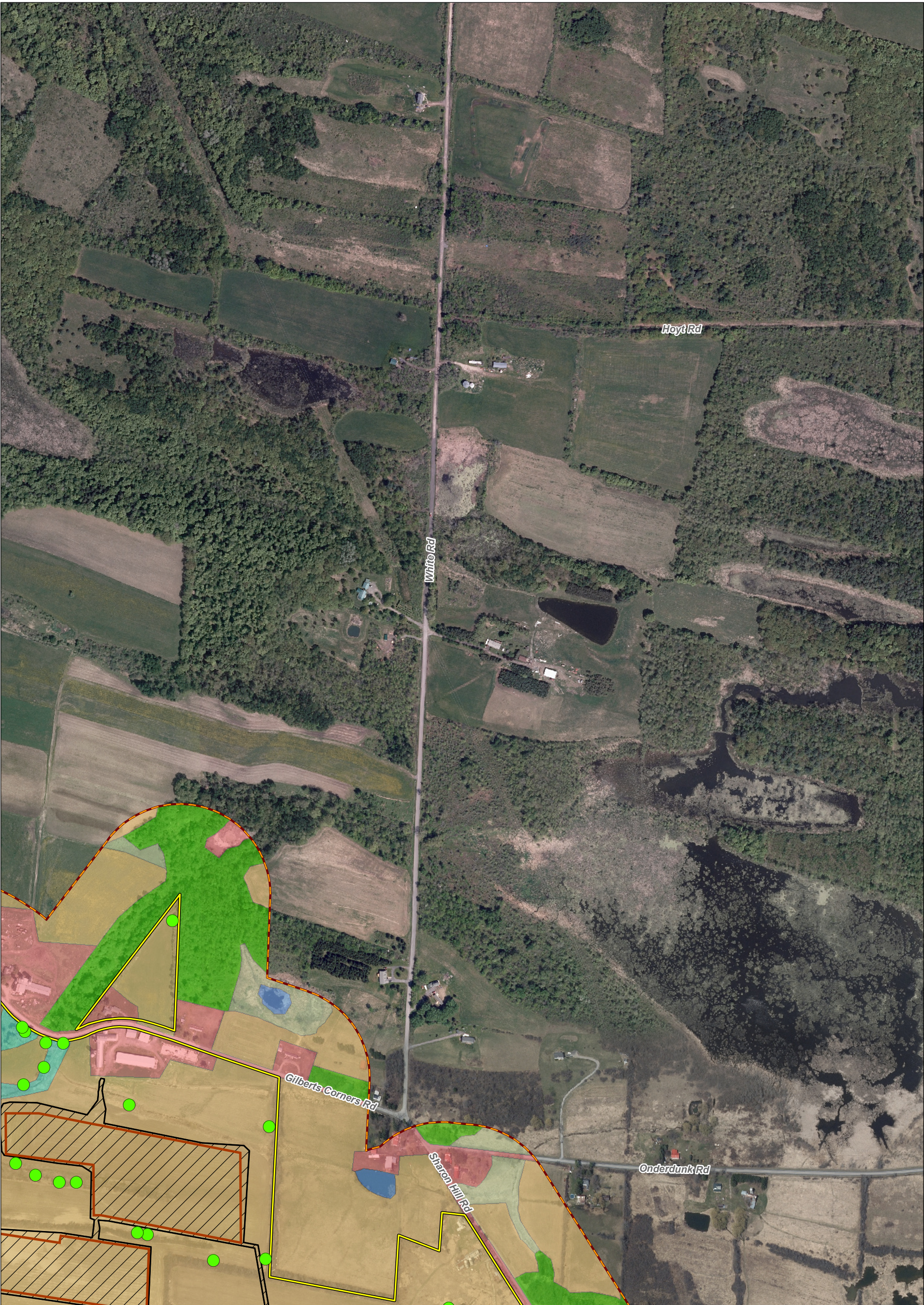


<ul style="list-style-type: none"><li>Project Area</li><li>Proposed Facility Limits</li><li>NYSDEC 500-Foot Radius Around Project Area</li><li>Limit of Disturbance (LOD)</li><li>500-Ft Buffer Around Project Area and LOD</li><li>Invasive Species Occurrence</li></ul>	<p>Plant Communities</p> <ul style="list-style-type: none"><li>Active</li><li>Disturbed/Developed</li><li>Forestland</li><li>Open Water</li><li>Successional Old-field</li><li>Successional Shrubland</li></ul>	<p>MAP LOCATION</p>	<p><b>NEXTERA ENERGY RESOURCES</b></p> <p><b>PLANT COMMUNITIES OF THE PROJECT AREA</b></p> <p><b>EAST POINT ENERGY CENTER, LLC</b></p> <p><b>TOWN OF SHARON, NY</b></p> <p><b>SHEET 1 OF 6</b></p>
<p>Data: TRC Base Map: NYS Office of Information Technology Services, GIS Program Office, 2018</p> <p>0 250 500 Feet</p>		<p>FIGURE 22-1</p>	<p>SEPTEMBER 2019</p> <p>Map Produced by <b>TRC</b></p>





<ul style="list-style-type: none"><li>Project Area</li><li>Proposed Facility Limits</li><li>NYSDEC 500-Foot Radius Around Project Area</li><li>Limit of Disturbance (LOD)</li><li>500-Ft Buffer Around Project Area and LOD</li><li>Invasive Species Occurrence</li></ul>	<p><b>Plant Communities</b></p> <ul style="list-style-type: none"><li>Active</li><li>Disturbed/Developed</li><li>Forestland</li><li>Open Water</li><li>Successional Old-field</li><li>Successional Shrubland</li></ul>	<p>0 250 500 Feet</p>	<p><b>MAP LOCATION</b></p>	<p><b>NEXTERA ENERGY RESOURCES</b></p> <p><b>PLANT COMMUNITIES OF THE PROJECT AREA</b> <b>EAST POINT ENERGY CENTER, LLC</b> <b>TOWN OF SHARON, NY</b> <b>SHEET 2 OF 6</b></p> <p>FIGURE 22-1 SEPTEMBER 2019</p> <p>Map Produced by <b>TRC</b></p>
---	--	-----------------------	----------------------------	---





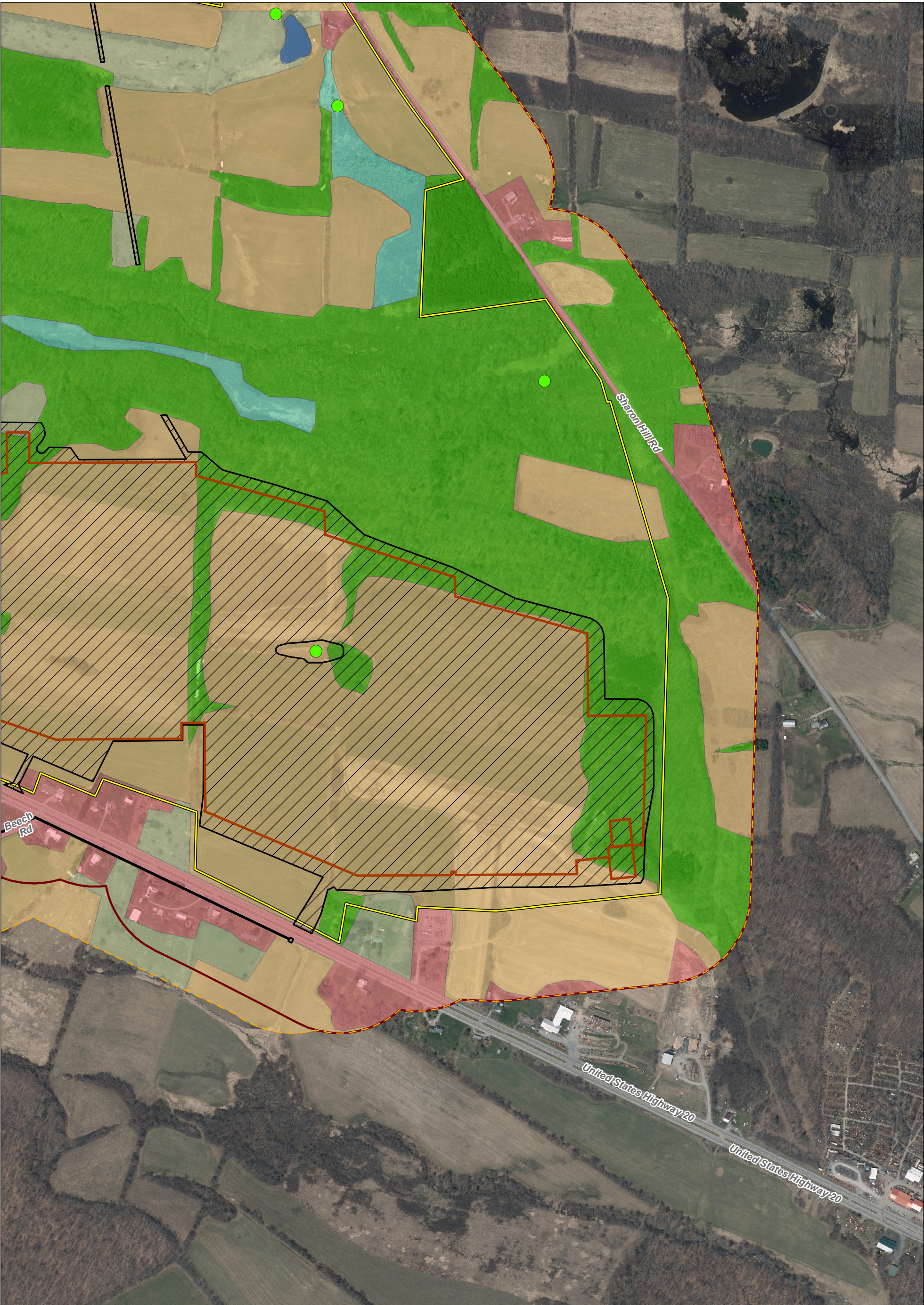
<ul style="list-style-type: none"><li>Project Area</li><li>Proposed Facility Limits</li><li>NYSDEC 500-Foot Radius Around Project Area</li><li>Limit of Disturbance (LOD)</li><li>500-Ft Buffer Around Project Area and LOD</li><li>Invasive Species Occurrence</li></ul>	<p>Plant Communities</p> <ul style="list-style-type: none"><li>Active</li><li>Disturbed/Developed</li><li>Forestland</li><li>Open Water</li><li>Successional Old-field</li></ul>	<p>MAP LOCATION</p>	<p><b>NEXTERA</b> ENERGY RESOURCES</p> <p><b>PLANT COMMUNITIES OF THE PROJECT AREA</b> <b>EAST POINT ENERGY CENTER, LLC</b> <b>TOWN OF SHARON, NY</b> <b>SHEET 3 OF 6</b></p>
<p>Data: TRC Base Map: NYS Office of Information Technology Services, GIS Program Office, 2018</p>	<p>0 250 500 Feet</p>		<p>FIGURE 22-1 SEPTEMBER 2019 Map Produced by <b>TRC</b></p>





<ul style="list-style-type: none"><li>Project Area</li><li>Proposed Facility Limits</li><li>NYSDEC 500-Foot Radius Around Project Area</li><li>Limit of Disturbance (LOD)</li><li>500-Ft Buffer Around Project Area and LOD</li><li>Invasive Species Occurrence</li></ul>	<p>Plant Communities</p> <ul style="list-style-type: none"><li>Active</li><li>Disturbed/Developed</li><li>Forestland</li><li>Open Water</li><li>Successional Old-field</li><li>Successional Shrubland</li></ul>	<p>MAP LOCATION</p>	<p><b>NEXTERA</b> ENERGY RESOURCES</p> <p><b>PLANT COMMUNITIES OF THE PROJECT AREA</b> <b>EAST POINT ENERGY CENTER, LLC</b> <b>TOWN OF SHARON, NY</b> <b>SHEET 4 OF 6</b></p>
<p>Data: TRC Base Map: NYS Office of Information Technology Services, GIS Program Office, 2018</p>	<p>0 250 500 Feet</p>		<p>FIGURE 22-1 SEPTEMBER 2019</p> <p>Map Produced by <b>TRC</b></p>





<ul style="list-style-type: none"><li>Project Area</li><li>Proposed Facility Limits</li><li>NYSDEC 500-Foot Radius Around Project Area</li><li>Limit of Disturbance (LOD)</li><li>500-Ft Buffer Around Project Area and LOD</li><li>Invasive Species Occurrence</li></ul>	<p>Plant Communities</p> <ul style="list-style-type: none"><li>Active</li><li>Disturbed/Developed</li><li>Forestland</li><li>Open Water</li><li>Successional Old-field</li><li>Successional Shrubland</li></ul>	<p>MAP LOCATION</p>	<p><b>NEXTERA</b> ENERGY RESOURCES</p> <p><b>PLANT COMMUNITIES OF THE PROJECT AREA</b> <b>EAST POINT ENERGY CENTER, LLC</b> <b>TOWN OF SHARON, NY</b> <b>SHEET 5 OF 6</b></p>
<p>Data: TRC Base Map: NYS Office of Information Technology Services, GIS Program Office, 2018</p>	<p>0 250 500 Feet</p>		<p>FIGURE 22-1 SEPTEMBER 2019 Map Produced by <b>TRC</b></p>





<ul style="list-style-type: none"><li>Project Area</li><li>Proposed Facility Limits</li><li>NYSDEC 500-Foot Radius Around Project Area</li><li>Limit of Disturbance (LOD)</li><li>500-Ft Buffer Around Project Area and LOD</li></ul>	<p>Plant Communities</p> <ul style="list-style-type: none"><li>Active</li><li>Disturbed/Developed</li><li>Forestland</li><li>Open Water</li><li>Successional Old-field</li></ul>	<p>0 250 500 Feet</p>		<p>MAP LOCATION</p>	<p><b>NEXTERA</b> ENERGY RESOURCES</p> <p><b>PLANT COMMUNITIES OF THE PROJECT AREA</b> <b>EAST POINT ENERGY CENTER, LLC</b> <b>TOWN OF SHARON, NY</b> <b>SHEET 6 OF 6</b></p> <p>FIGURE 22-1      SEPTEMBER 2019</p> <p>Map Produced by <b>TRC</b></p>
---	--	-----------------------	--	---------------------	--

Data: TRC  
Base Map: NYS Office of Information Technology Services,  
GIS Program Office, 2018