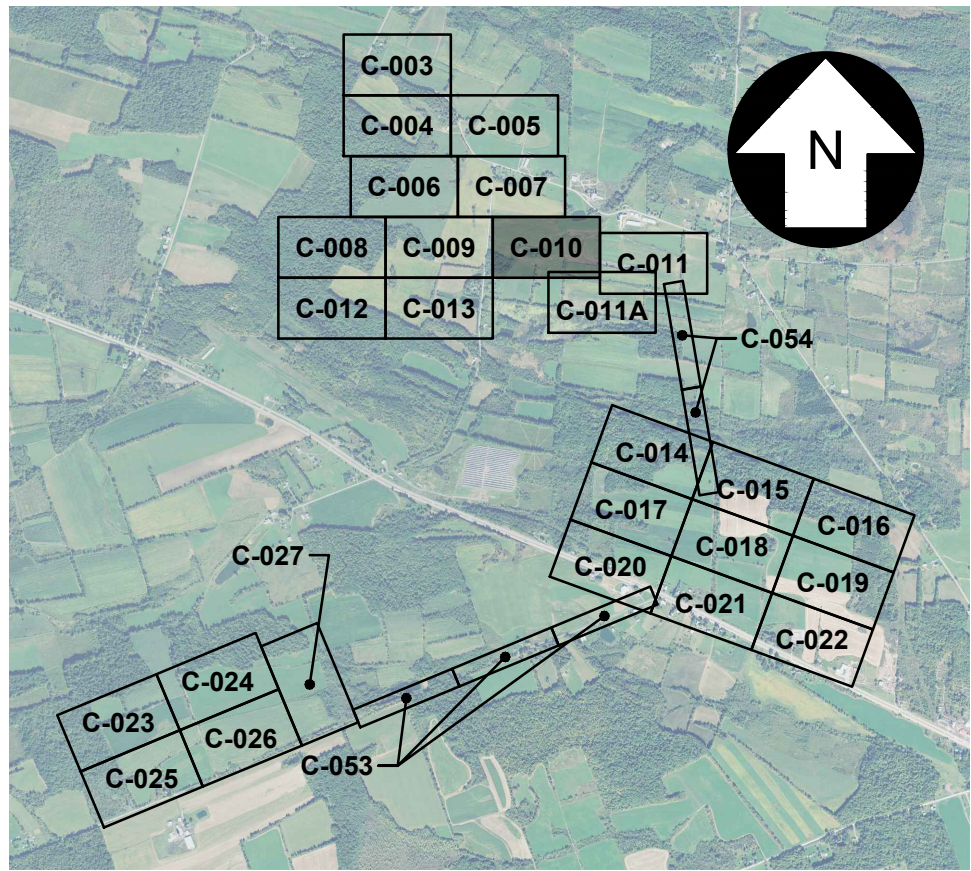
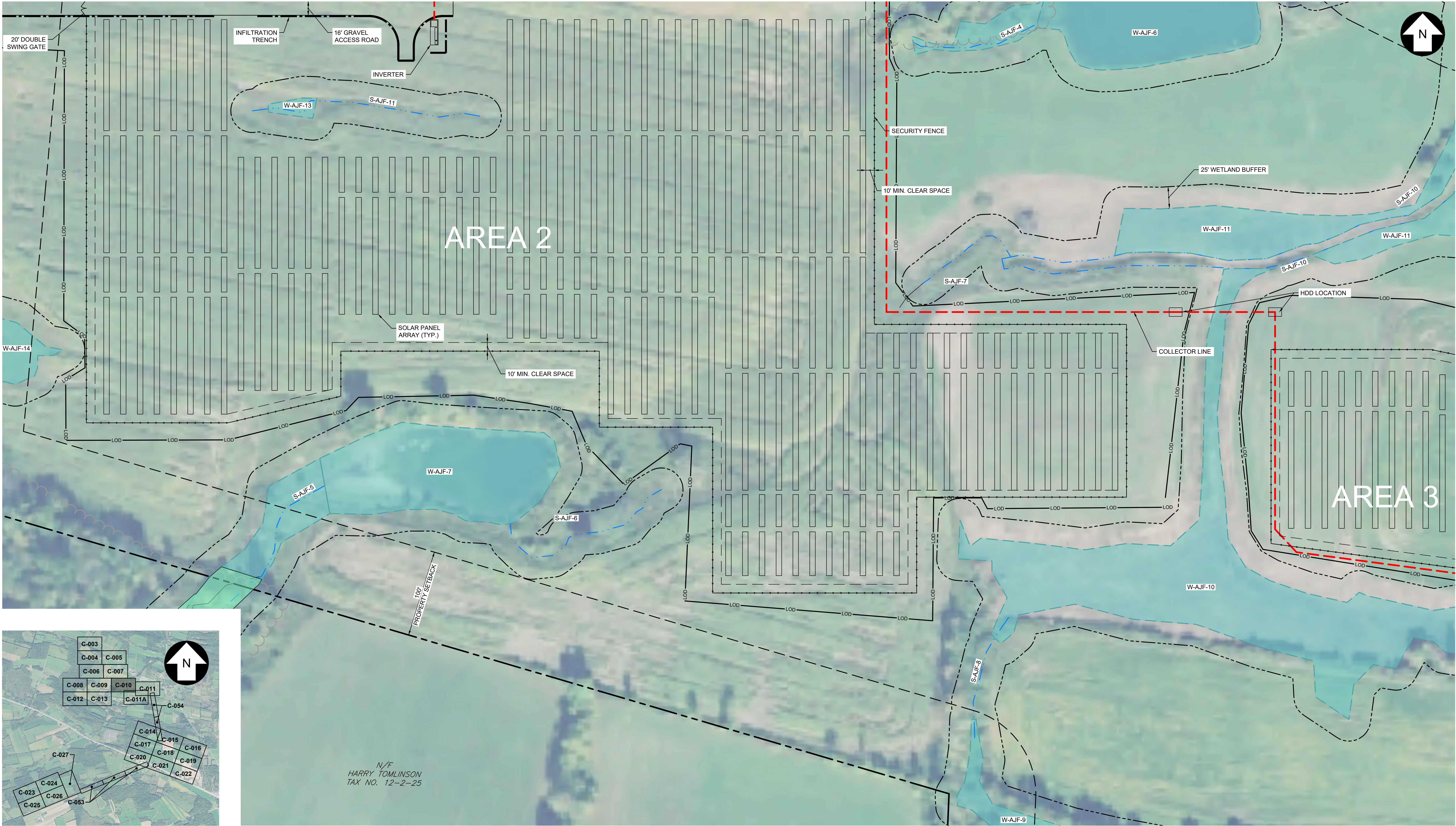


FOR CONTINUATION, SEE DRAWING C-007

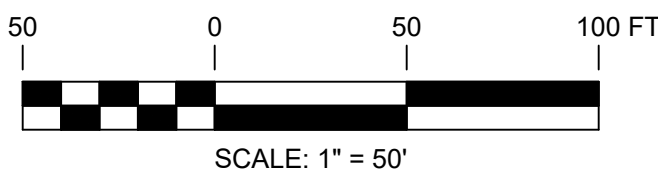
FOR CONTINUATION, SEE DRAWING C-009

FOR CONTINUATION, SEE DRAWING C-011



KEY MAP  
SCALE: 1" = 3,000'

FOR CONTINUATION, SEE DRAWING C-014



PERMITTING  
NOT FOR CONSTRUCTION



UNDER NEW YORK STATE EDUCATION LAW ARTICLE 145 (ENGINEERING), SECTION 7209 (2), IT IS A VIOLATION OF THE LAW FOR ANY PERSON, UNLESS ACTING UNDER THE DIRECTION OF A LICENSED PROFESSIONAL ENGINEER, TO ALTER THIS DOCUMENT.

REFERENCE ITEMS		REV	DESCRIPTION	DATE	DES	CHK	APP
		D	ISSUED FOR PERMITTING	08-30-19	CMW	PMM	
		C	ISSUED FOR CLIENT REVIEW	08-22-19	SEK	RAY	
		B	ISSUED FOR CLIENT REVIEW	08-02-19	SEK	PMM	
		A	ISSUED FOR CLIENT REVIEW	06-20-19	SEK	PMM	



249 Western Avenue  
Augusta, ME 04330

PROJECT NO: 327851

CMW  
DESIGNED  
SEK  
DRAWN  
PMM  
CHECKED  
APPROVED

PRELIMINARY  
SITE LAYOUT  
EAST POINT ENERGY CENTER  
EAST POINT ENERGY CENTER, LLC  
SCHOHARIE CO., NY

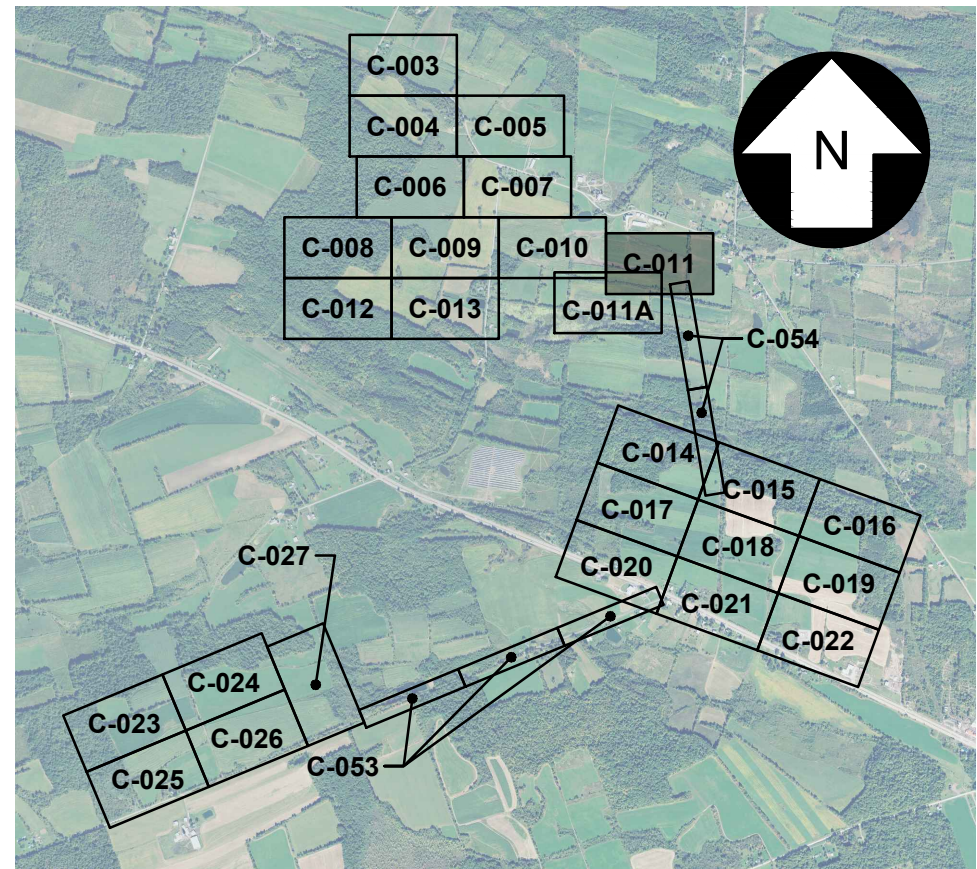
SHARON



C-010

REV.  
D



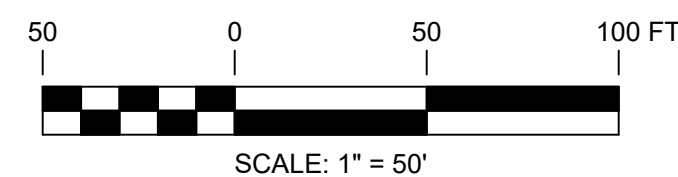


KEY MAP  
SCALE: 1" = 3,000'



FOR CONTINUATION, SEE DRAWING C-010

FOR CONTINUATION, SEE DRAWING C-015



PERMITTING  
NOT FOR CONSTRUCTION



UNDER NEW YORK STATE EDUCATION LAW ARTICLE 145 (ENGINEERING), SECTION 7209 (2), IT IS A VIOLATION OF THE LAW FOR ANY PERSON, UNLESS ACTING UNDER THE DIRECTION OF A LICENSED PROFESSIONAL ENGINEER, TO ALTER THIS DOCUMENT.

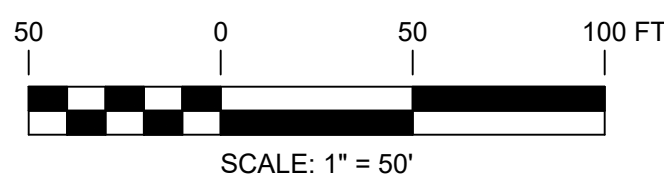
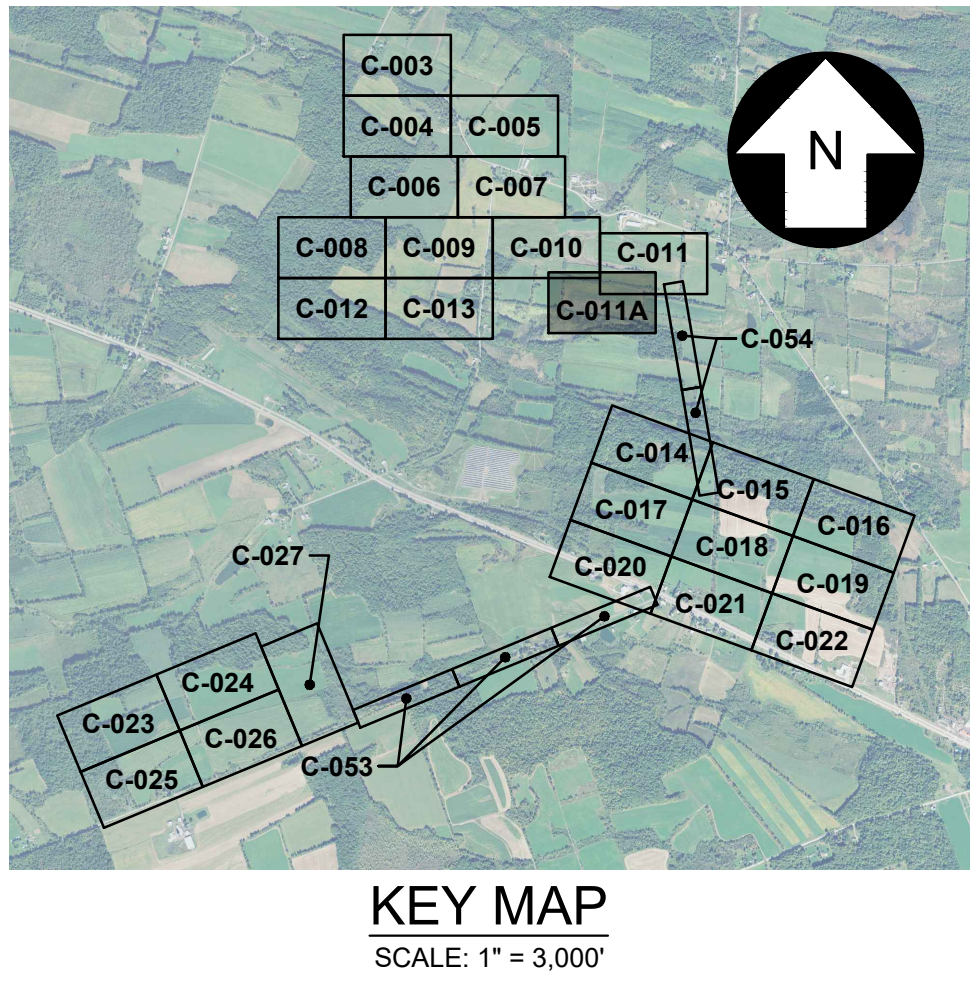
REFERENCE ITEMS		PROJECT NO: 327851					
REV	DESCRIPTION	DATE	DES	CHK	APP		
D	ISSUED FOR PERMITTING	08-30-19	CMW	PMM			
C	ISSUED FOR CLIENT REVIEW	08-22-19	SEK	RAY			
B	ISSUED FOR CLIENT REVIEW	08-02-19	SEK	PMM			
A	ISSUED FOR CLIENT REVIEW	06-20-19	SEK	PMM			

CMW  
DESIGNED  
SEK  
DRAWN  
PMM  
CHECKED  
APPROVED

PRELIMINARY  
SITE LAYOUT  
EAST POINT ENERGY CENTER  
EAST POINT ENERGY CENTER, LLC  
SCHOHARIE CO., NY

SHARON  
04/08  
DATE  
AS NOTED  
SCALE  
TRC  
C-011  
REV.  
D





PERMITTING  
NOT FOR CONSTRUCTION



UNDER NEW YORK STATE EDUCATION LAW ARTICLE 145 (ENGINEERING), SECTION 7209 (2), IT IS A VIOLATION OF THE LAW FOR ANY PERSON, UNLESS ACTING UNDER THE DIRECTION OF A LICENSED PROFESSIONAL ENGINEER, TO ALTER THIS DOCUMENT.

REFERENCE ITEMS		REV	DESCRIPTION	DATE	DES	CHK	APP
		B	ISSUED FOR PERMITTING	08-30-19	CMW	PMM	
		A	ISSUED FOR CLIENT REVIEW	08-22-19	CMW	PMM	



249 Western Avenue  
Augusta, ME 04330

PROJECT NO: 327851

CMW  
DESIGNED  
SEK  
DRAWN  
PMM  
CHECKED  
APPROVED

PRELIMINARY  
SITE LAYOUT  
EAST POINT ENERGY CENTER  
EAST POINT ENERGY CENTER, LLC  
SCHOHARIE CO., NY

SHARON



C-011A

REV.  
B



100' MIN. CLEARING

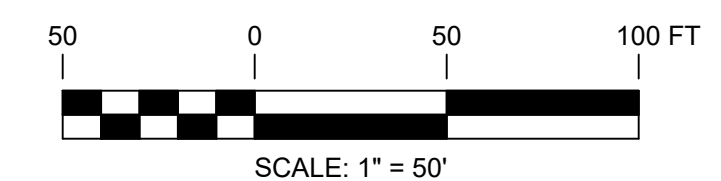
SECURITY FENCE

SOLAR PANEL ARRAY (TYP.)

PROPERTY SET



N/F  
JOHN S. GASIOROWSKI AND  
ELIZABETH D. GASIOROWSKI  
TAX NO. 12-1-6

FOR CONTINUATION, SEE DRAWING C-013



PERMITTING  
NOT FOR CONSTRUCTION



<div></div> <div>249 Western Avenue Augusta, ME 04330</div>		PROJECT NO: 327851							<div><div>CMW DESIGNED</div><div>SEK DRAWN</div><div>PMM CHECKED</div><div>APPROVED</div></div>		PRELIMINARY SITE LAYOUT  EAST POINT ENERGY CENTER EAST POINT ENERGY CENTER, LLC SHARON SCHOHARIE CO., NY			
REFERENCE ITEMS		REV	DESCRIPTION	DATE	DES	CHK	APP	REVIEW 1 DATE	REVIEW 2 SCALE	<div></div>	C-012	REV. D		
		D	ISSUED FOR PERMITTING	08-30-19	CMW	PMM								
		C	ISSUED FOR CLIENT REVIEW	08-22-19	SEK	RAY								
		B	ISSUED FOR CLIENT REVIEW	08-02-19	SEK	PMM								
		A	ISSUED FOR CLIENT REVIEW	06-20-19	SEK	PMM								

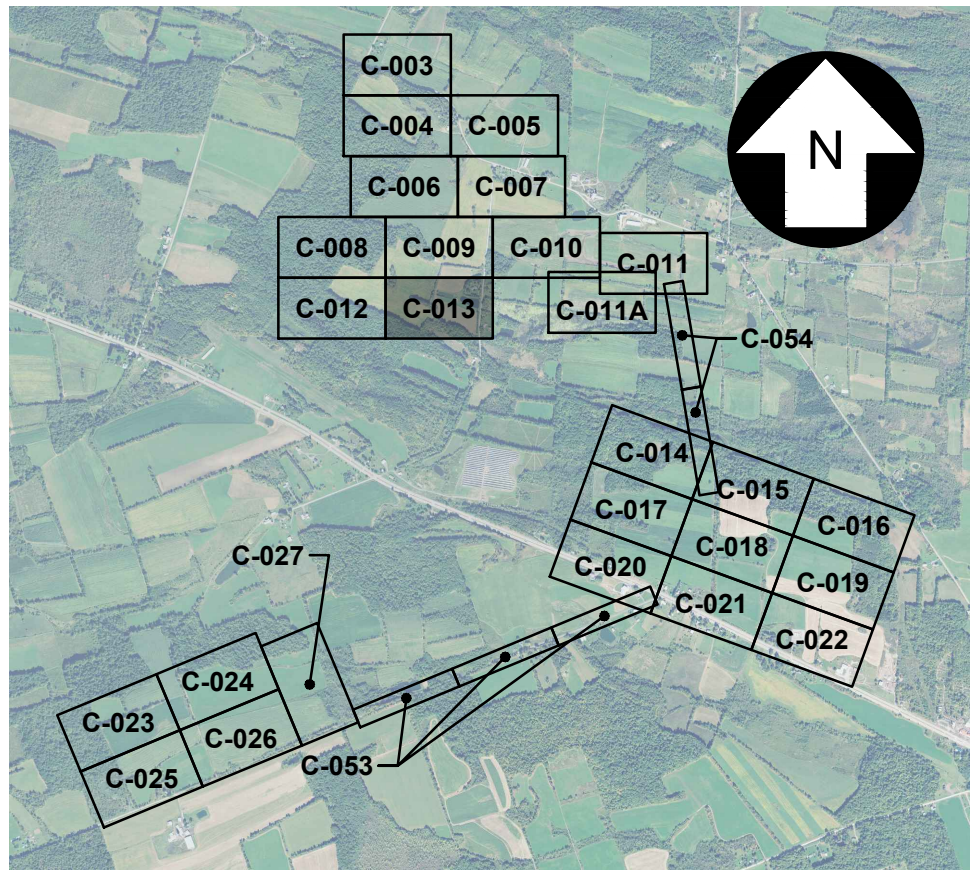
UNDER NEW YORK STATE EDUCATION LAW ARTICLE 145 (ENGINEERING), SECTION 7209 (2), IT IS A VIOLATION OF THE LAW FOR ANY PERSON, UNLESS ACTING UNDER THE DIRECTION OF A LICENSED PROFESSIONAL ENGINEER, TO ALTER THIS DOCUMENT.



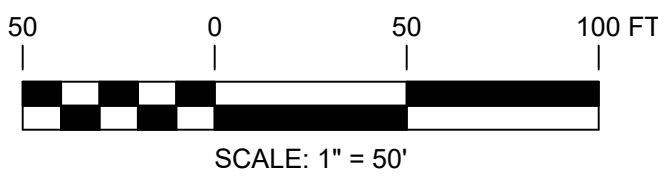
FOR CONTINUATION, SEE DRAWING C-009

FOR CONTINUATION, SEE DRAWING C-012

FOR CONTINUATION, SEE DRAWING C-014



KEY MAP  
SCALE: 1" = 3,000'



PERMITTING  
NOT FOR CONSTRUCTION



UNDER NEW YORK STATE EDUCATION LAW ARTICLE 145 (ENGINEERING), SECTION 7209 (2), IT IS A VIOLATION OF THE LAW FOR ANY PERSON, UNLESS ACTING UNDER THE DIRECTION OF A LICENSED PROFESSIONAL ENGINEER, TO ALTER THIS DOCUMENT.



249 Western Avenue  
Augusta, ME 04330

PROJECT NO: 327851

REFERENCE ITEMS		REV	DESCRIPTION	DATE	DES	CHK	APP
		D	ISSUED FOR PERMITTING	08-30-19	CMW	PMM	
		C	ISSUED FOR CLIENT REVIEW	08-22-19	SEK	RAY	
		B	ISSUED FOR CLIENT REVIEW	08-02-19	SEK	PMM	
		A	ISSUED FOR CLIENT REVIEW	06-20-19	SEK	PMM	

CMW  
DESIGNED  
SEK  
DRAWN  
PMM  
CHECKED  
APPROVED

PRELIMINARY  
SITE LAYOUT  
EAST POINT ENERGY CENTER  
EAST POINT ENERGY CENTER, LLC  
SCHOHARIE CO., NY

SHARON

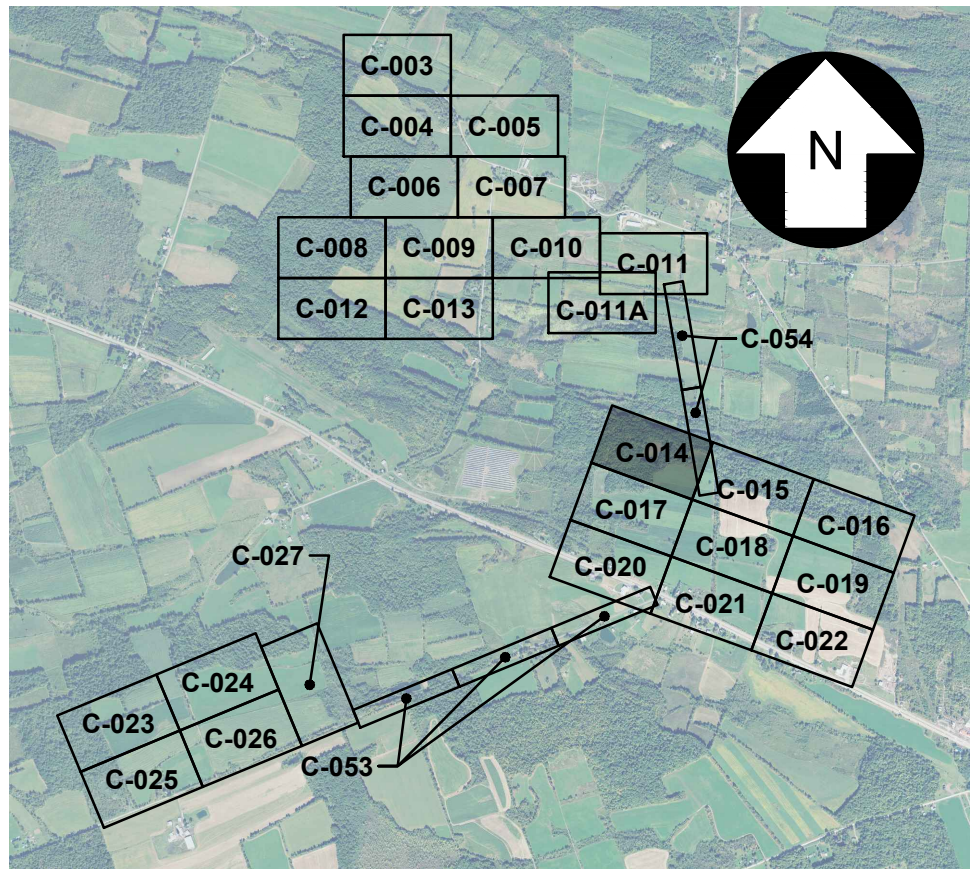
04/08  
DATE  
AS NOTED  
SCALE



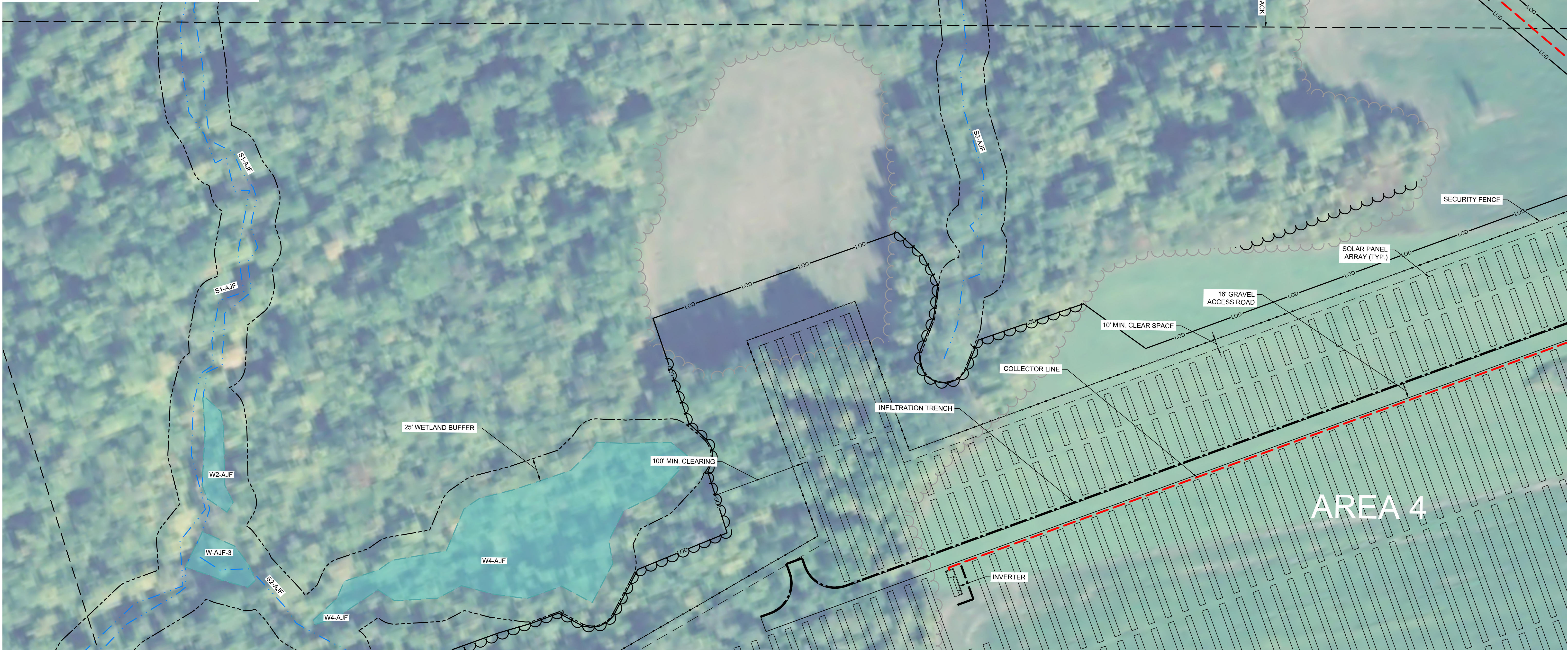
C-013

REV.  
D

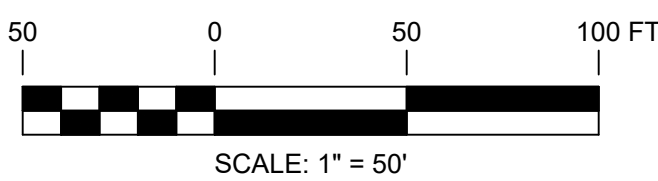




KEY MAP  
SCALE: 1" = 3,000'



FOR CONTINUATION, SEE DRAWING C-017



PERMITTING  
NOT FOR CONSTRUCTION



UNDER NEW YORK STATE EDUCATION LAW ARTICLE 145 (ENGINEERING), SECTION 7209 (2), IT IS A VIOLATION OF THE LAW FOR ANY PERSON, UNLESS ACTING UNDER THE DIRECTION OF A LICENSED PROFESSIONAL ENGINEER, TO ALTER THIS DOCUMENT.

REFERENCE ITEMS		PROJECT NO: 327851					
REV	DESCRIPTION	DATE	DES	CHK	APP		
D	ISSUED FOR PERMITTING	08-30-19	CMW	PMM			
C	ISSUED FOR CLIENT REVIEW	08-22-19	SEK	RAY			
B	ISSUED FOR CLIENT REVIEW	08-02-19	SEK	PMM			
A	ISSUED FOR CLIENT REVIEW	06-20-19	SEK	PMM			

CMW  
DESIGNED  
SEK  
DRAWN  
PMM  
CHECKED  
APPROVED

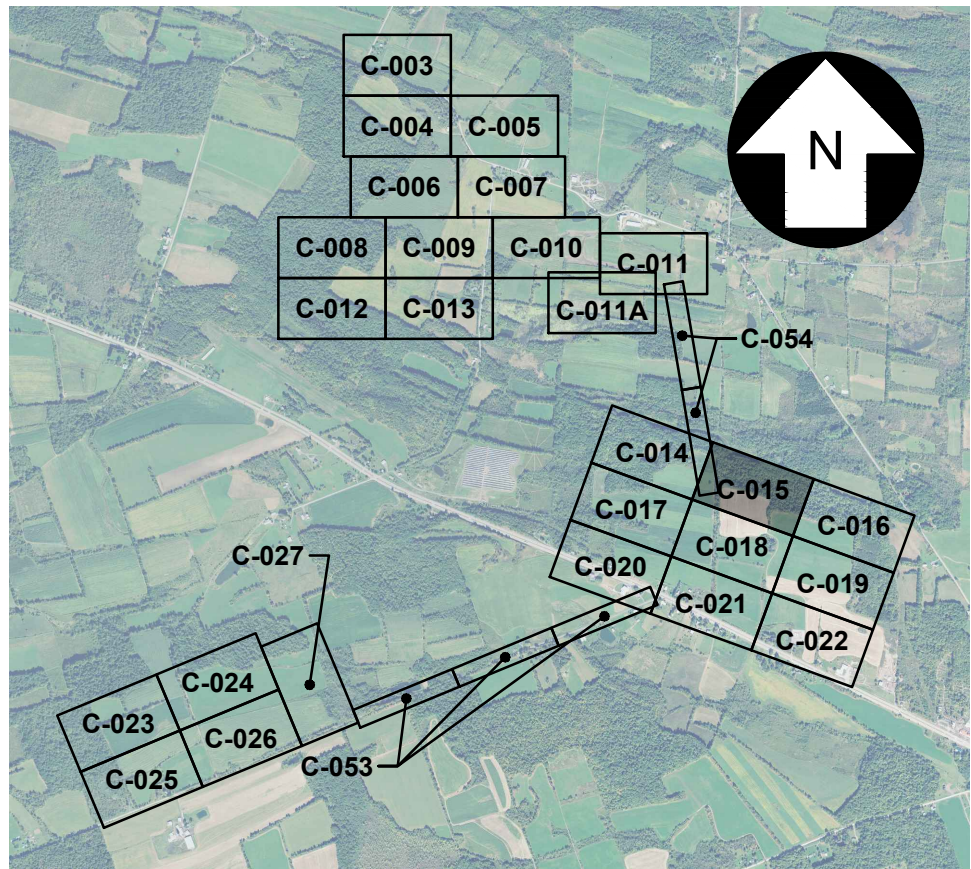
PRELIMINARY  
SITE LAYOUT  
EAST POINT ENERGY CENTER  
EAST POINT ENERGY CENTER, LLC  
SCHOHARIE CO., NY



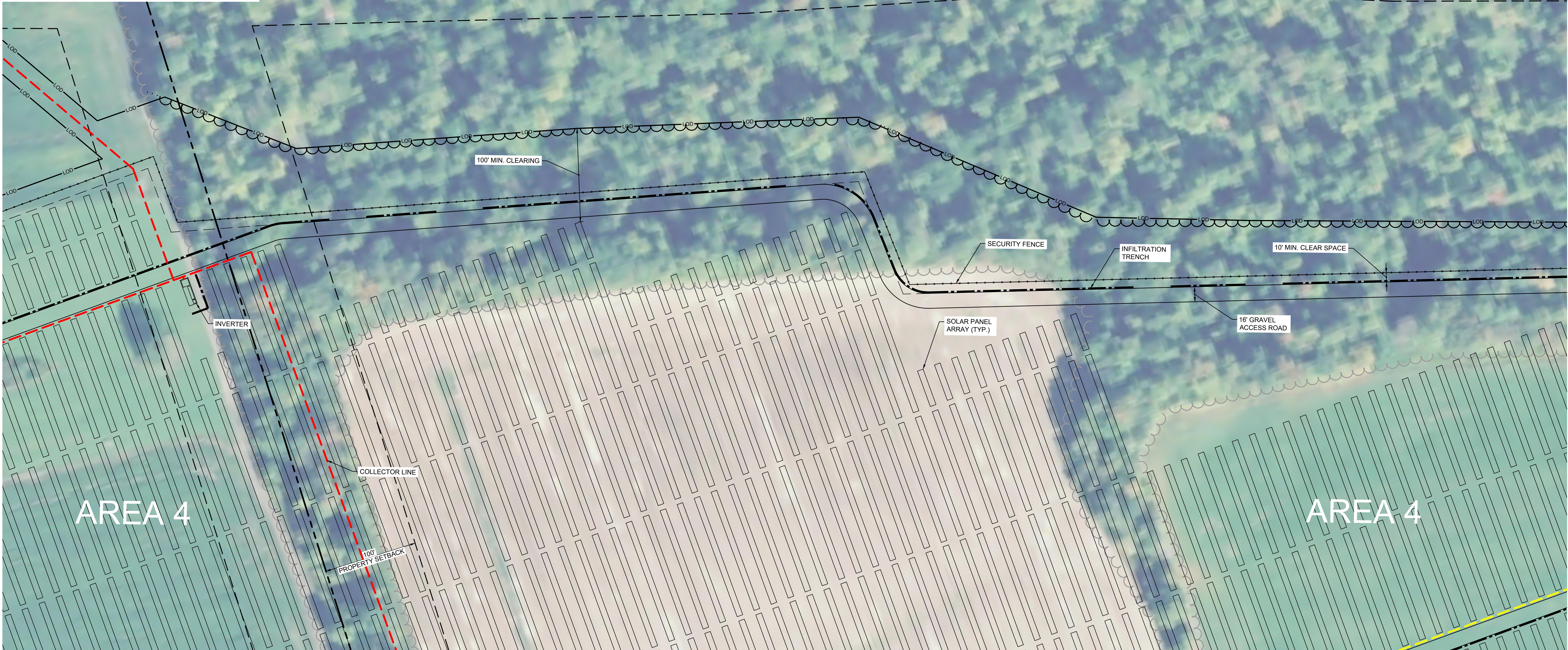
C-014

FOR CONTINUATION, SEE DRAWING C-015





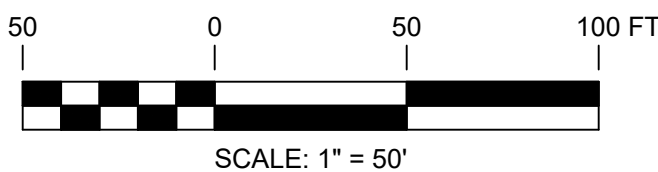
KEY MAP  
SCALE: 1" = 3,000'



FOR CONTINUATION, SEE DRAWING C-014

FOR CONTINUATION, SEE DRAWING C-016

FOR CONTINUATION, SEE DRAWING C-018



PERMITTING  
NOT FOR CONSTRUCTION



UNDER NEW YORK STATE EDUCATION LAW ARTICLE 145 (ENGINEERING), SECTION 7209 (2), IT IS A VIOLATION OF THE LAW FOR ANY PERSON, UNLESS ACTING UNDER THE DIRECTION OF A LICENSED PROFESSIONAL ENGINEER, TO ALTER THIS DOCUMENT.

REFERENCE ITEMS		REV	DESCRIPTION	DATE	DES	CHK	APP
		D	ISSUED FOR PERMITTING	08-30-19	CMW	PMM	
		C	ISSUED FOR CLIENT REVIEW	08-22-19	SEK	RAY	
		B	ISSUED FOR CLIENT REVIEW	08-02-19	SEK	PMM	
		A	ISSUED FOR CLIENT REVIEW	06-20-19	SEK	PMM	



249 Western Avenue  
Augusta, ME 04330

PROJECT NO: 327851

CMW  
DESIGNED  
SEK  
DRAWN  
PMM  
CHECKED  
APPROVED

PRELIMINARY  
SITE LAYOUT  
EAST POINT ENERGY CENTER  
EAST POINT ENERGY CENTER, LLC  
SCHOHARIE CO., NY

SHARON

REVIEW 1  
REVIEW 2

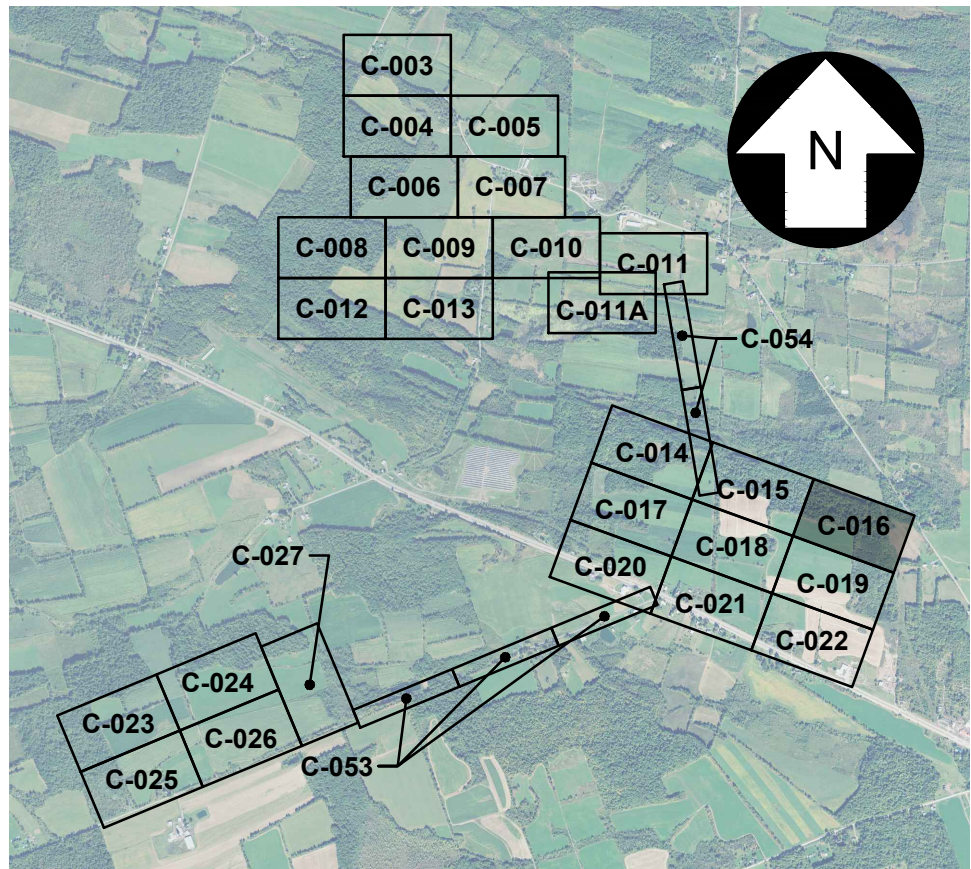
04/08  
DATE  
AS NOTED  
SCALE



C-015

REV.  
D

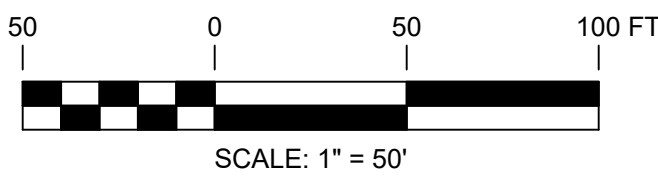




KEY MAP  
SCALE: 1" = 3,000'



FOR CONTINUATION, SEE DRAWING C-019



PERMITTING  
NOT FOR CONSTRUCTION



UNDER NEW YORK STATE EDUCATION LAW ARTICLE 145 (ENGINEERING), SECTION 7209 (2), IT IS A VIOLATION OF THE LAW FOR ANY PERSON, UNLESS ACTING UNDER THE DIRECTION OF A LICENSED PROFESSIONAL ENGINEER, TO ALTER THIS DOCUMENT.

REFERENCE ITEMS		REV	DESCRIPTION	DATE	DES	CHK	APP
		D	ISSUED FOR PERMITTING	08-30-19	CMW	PMM	
		C	ISSUED FOR CLIENT REVIEW	08-22-19	SEK	RAY	
		B	ISSUED FOR CLIENT REVIEW	08-02-19	SEK	PMM	
		A	ISSUED FOR CLIENT REVIEW	06-20-19	SEK	PMM	



249 Western Avenue  
Augusta, ME 04330

PROJECT NO: 327851

CMW  
DESIGNED  
SEK  
DRAWN  
PMM  
CHECKED  
APPROVED

PRELIMINARY  
SITE LAYOUT  
EAST POINT ENERGY CENTER  
EAST POINT ENERGY CENTER, LLC  
SCHOHARIE CO., NY

SHARON

REVIEW 1  
DATE  
REVIEW 2  
SCALE

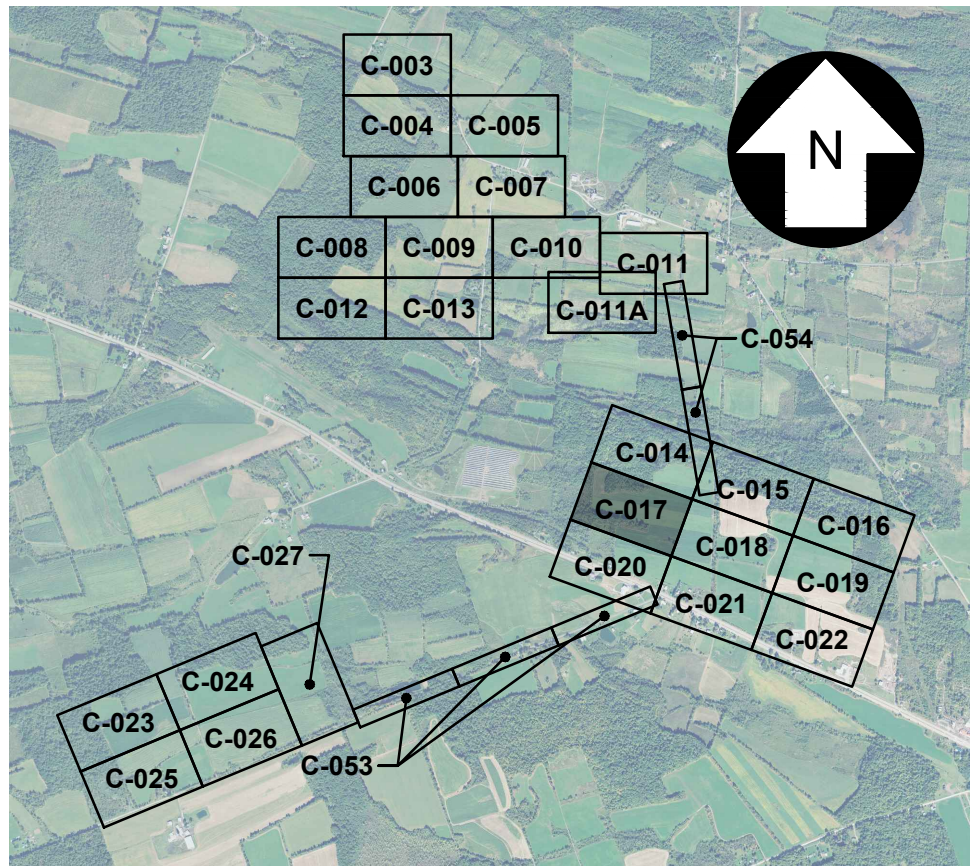


C-016

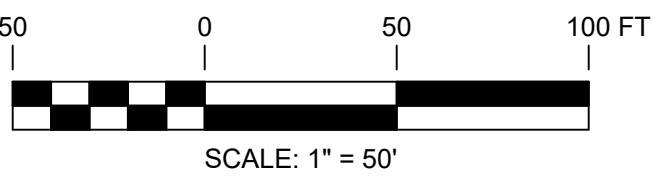
REV.  
D



FOR CONTINUATION, SEE DRAWING C-014



FOR CONTINUATION, SEE DRAWING C-020



PERMITTING  
NOT FOR CONSTRUCTION



UNDER NEW YORK STATE EDUCATION LAW ARTICLE 145 (ENGINEERING), SECTION 7209 (2), IT IS A VIOLATION OF THE LAW FOR ANY PERSON, UNLESS ACTING UNDER THE DIRECTION OF A LICENSED PROFESSIONAL ENGINEER, TO ALTER THIS DOCUMENT.



249 Western Avenue  
Augusta, ME 04330

PROJECT NO: 327851

REFERENCE ITEMS	REV	DESCRIPTION	DATE	DES	CHK	APP
	D	ISSUED FOR PERMITTING	08-30-19	CMW	PMM	
	C	ISSUED FOR CLIENT REVIEW	08-22-19	SEK	RAY	
	B	ISSUED FOR CLIENT REVIEW	08-02-19	SEK	PMM	
	A	ISSUED FOR CLIENT REVIEW	06-20-19	SEK	PMM	

CMW  
DESIGNED  
SEK  
DRAWN  
PMM  
CHECKED  
APPROVED

PRELIMINARY  
SITE LAYOUT  
EAST POINT ENERGY CENTER  
EAST POINT ENERGY CENTER, LLC  
SCHOHARIE CO., NY

SHARON



C-017

REV.  
D

327851-EAST POINT-OPT 2\_C-017.dwg 2019.08.26



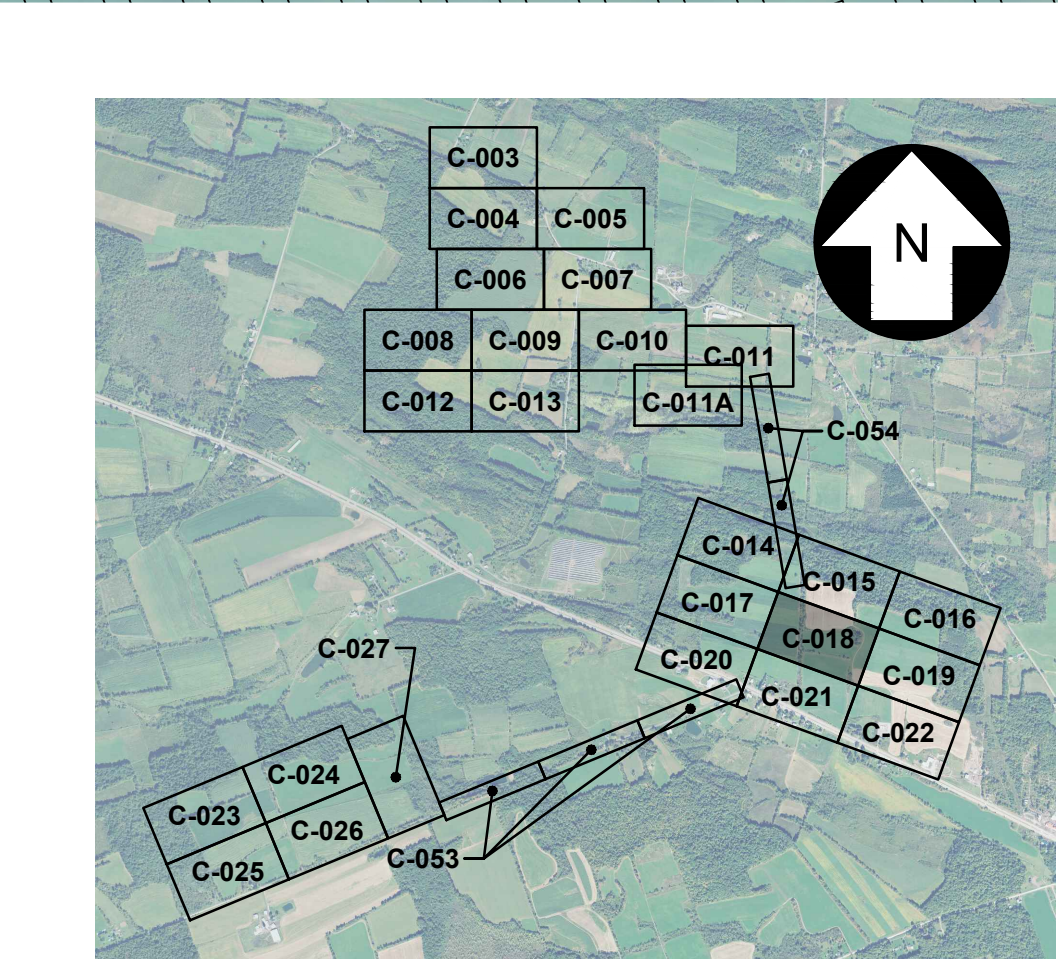
FOR CONTINUATION, SEE DRAWING C-015

FOR CONTINUATION, SEE DRAWING C-017

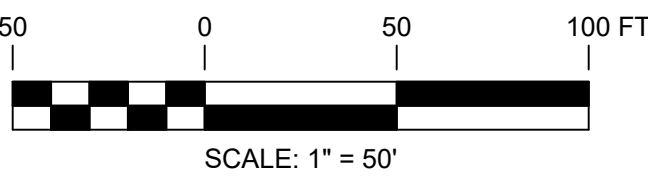


FOR CONTINUATION, SEE DRAWING C-019

FOR CONTINUATION, SEE DRAWING C-021



KEY MAP  
SCALE: 1" = 3,000'



PERMITTING  
NOT FOR CONSTRUCTION



UNDER NEW YORK STATE EDUCATION LAW ARTICLE 145 (ENGINEERING), SECTION 7209 (2), IT IS A VIOLATION OF THE LAW FOR ANY PERSON, UNLESS ACTING UNDER THE DIRECTION OF A LICENSED PROFESSIONAL ENGINEER, TO ALTER THIS DOCUMENT.

REFERENCE ITEMS		REV	DESCRIPTION	DATE	DES	CHK	APP
		D	ISSUED FOR PERMITTING	08-30-19	CMW	PMM	
		C	ISSUED FOR CLIENT REVIEW	08-22-19	SEK	RAY	
		B	ISSUED FOR CLIENT REVIEW	07-31-19	SEK	PMM	
		A	ISSUED FOR CLIENT REVIEW	06-20-19	SEK	PMM	



249 Western Avenue  
Augusta, ME 04330

PROJECT NO: 327851

CMW  
DESIGNED  
SEK  
DRAWN  
PMM  
CHECKED  
APPROVED

PRELIMINARY  
SITE LAYOUT  
EAST POINT ENERGY CENTER  
EAST POINT ENERGY CENTER, LLC  
SCHOHARIE CO., NY

SHARON

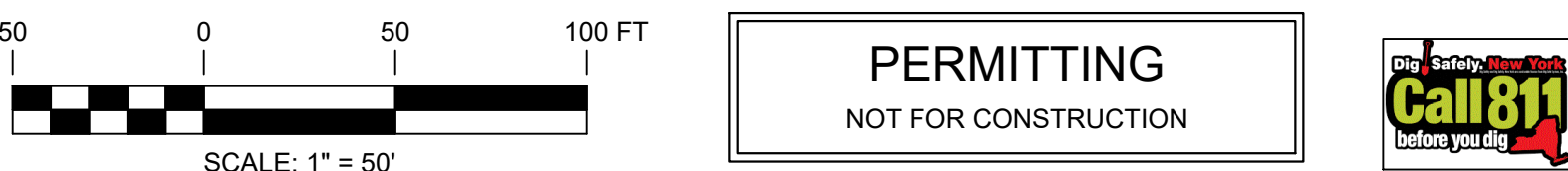
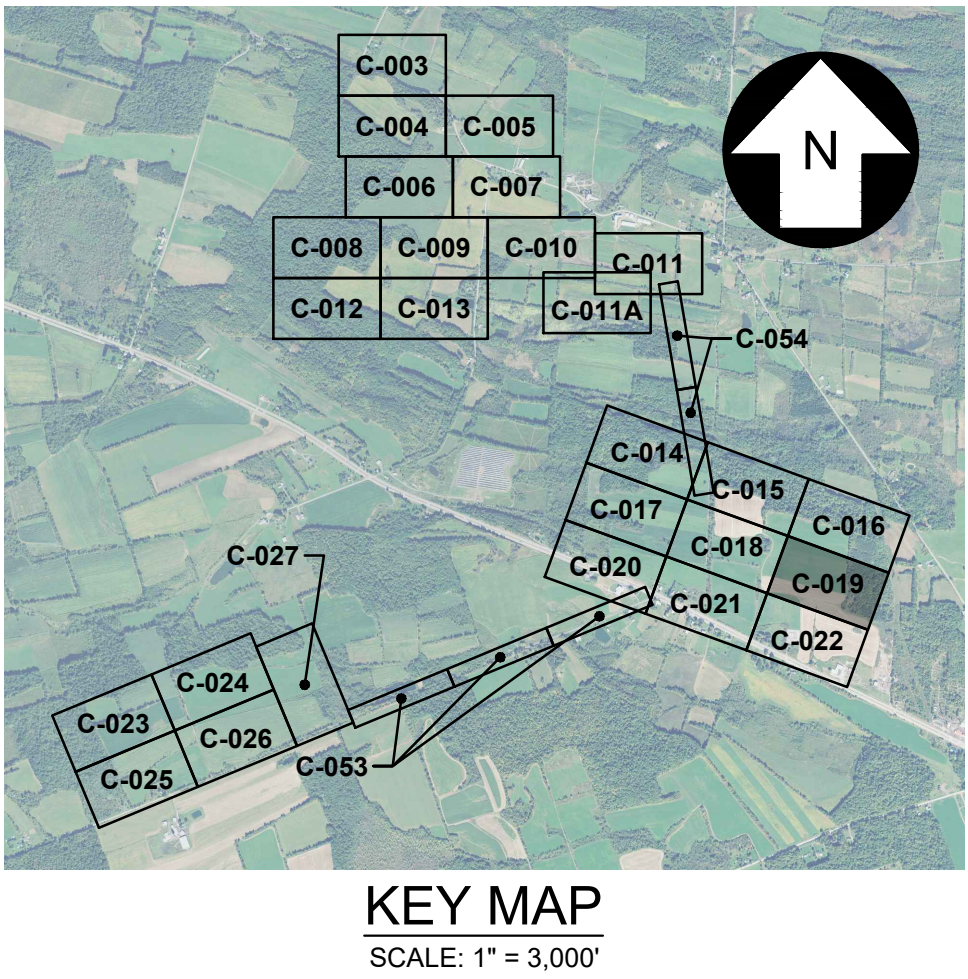


C-018


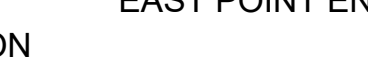
REV.  
D



FOR CONTINUATION, SEE DRAWING C-018

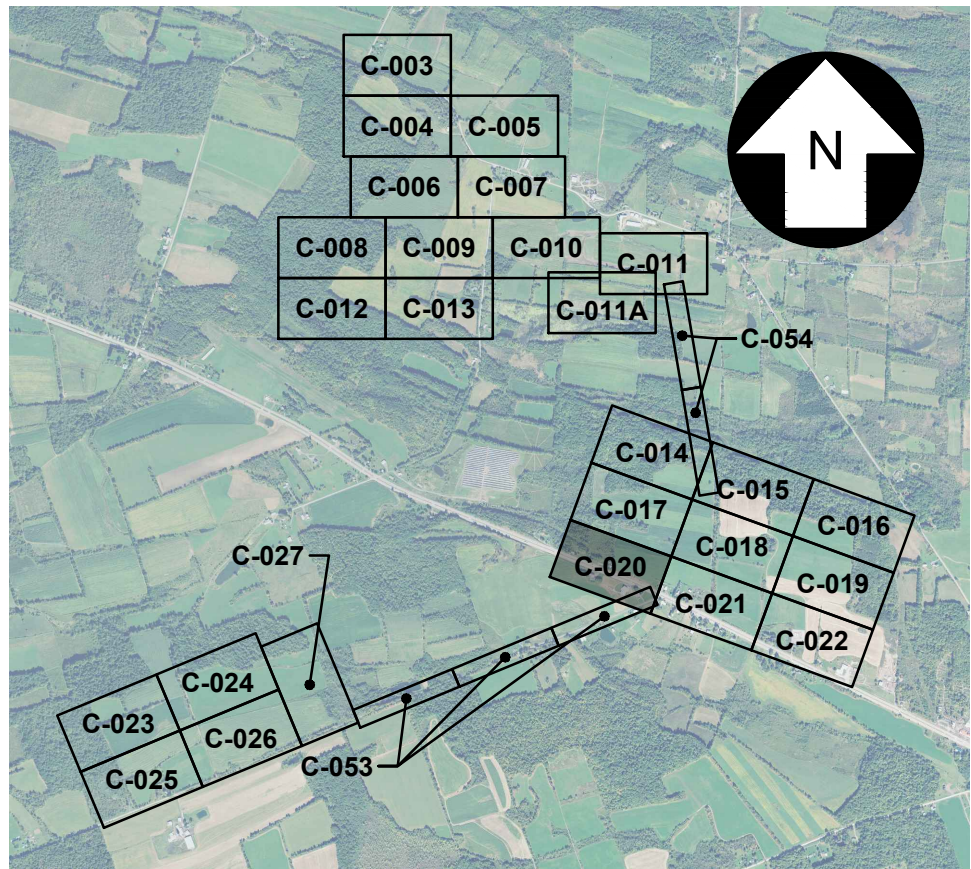


UNDER NEW YORK STATE EDUCATION LAW ARTICLE 145 (ENGINEERING), SECTION 7209 (2), IT IS A VIOLATION OF THE LAW FOR ANY PERSON, UNLESS ACTING UNDER THE DIRECTION OF A LICENSED PROFESSIONAL ENGINEER, TO ALTER THIS DOCUMENT.

		<div><div>249 Western Avenue Augusta, ME 04330</div></div> <div>PROJECT NO: 327851</div>						<div><div>CMW DESIGNED</div><div>SEK DRAWN</div><div>PMM CHECKED</div><div>APPROVED</div></div>		<div>PRELIMINARY SITE LAYOUT EAST POINT ENERGY CENTER EAST POINT ENERGY CENTER, LLC SCHOHARIE CO., NY</div>																																								
		<table><thead><tr><th colspan="2">REFERENCE ITEMS</th><th>REV</th><th>DESCRIPTION</th><th>DATE</th><th>DES</th><th>CHK</th><th>APP</th></tr></thead><tbody><tr><td></td><td></td><td>D</td><td>ISSUED FOR PERMITTING</td><td>08-30-19</td><td>CMW</td><td>PMM</td><td></td></tr><tr><td></td><td></td><td>C</td><td>ISSUED FOR CLIENT REVIEW</td><td>08-22-19</td><td>SEK</td><td>RAY</td><td></td></tr><tr><td></td><td></td><td>B</td><td>ISSUED FOR CLIENT REVIEW</td><td>08-02-19</td><td>SEK</td><td>PMM</td><td></td></tr><tr><td></td><td></td><td>A</td><td>ISSUED FOR CLIENT REVIEW</td><td>06-20-19</td><td>SEK</td><td>PMM</td><td></td></tr></tbody></table>						REFERENCE ITEMS		REV	DESCRIPTION	DATE	DES	CHK	APP			D	ISSUED FOR PERMITTING	08-30-19	CMW	PMM				C	ISSUED FOR CLIENT REVIEW	08-22-19	SEK	RAY				B	ISSUED FOR CLIENT REVIEW	08-02-19	SEK	PMM				A	ISSUED FOR CLIENT REVIEW	06-20-19	SEK	PMM		<div><div>REVIEW 1 DATE</div><div>REVIEW 2 SCALE</div></div>	<div><div>04/08</div><div>AS NOTED</div></div>	<div></div>
REFERENCE ITEMS		REV	DESCRIPTION	DATE	DES	CHK	APP																																											
		D	ISSUED FOR PERMITTING	08-30-19	CMW	PMM																																												
		C	ISSUED FOR CLIENT REVIEW	08-22-19	SEK	RAY																																												
		B	ISSUED FOR CLIENT REVIEW	08-02-19	SEK	PMM																																												
		A	ISSUED FOR CLIENT REVIEW	06-20-19	SEK	PMM																																												



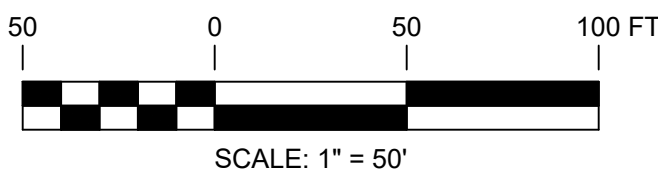
FOR CONTINUATION, SEE DRAWING C-017



KEY MAP  
SCALE: 1" = 3,000'



FOR CONTINUATION, SEE DRAWING C-021



PERMITTING  
NOT FOR CONSTRUCTION



UNDER NEW YORK STATE EDUCATION LAW ARTICLE 145 (ENGINEERING), SECTION 7209 (2), IT IS A VIOLATION OF THE LAW FOR ANY PERSON, UNLESS ACTING UNDER THE DIRECTION OF A LICENSED PROFESSIONAL ENGINEER, TO ALTER THIS DOCUMENT.

REFERENCE ITEMS		PROJECT NO: 327851					
REV	DESCRIPTION	DATE	DES	CHK	APP		
D	ISSUED FOR PERMITTING	08-30-19	CMW	PMM			
C	ISSUED FOR CLIENT REVIEW	08-22-19	SEK	RAY			
B	ISSUED FOR CLIENT REVIEW	08-02-19	SEK	PMM			
A	ISSUED FOR CLIENT REVIEW	06-20-19	SEK	PMM			

CMW  
DESIGNED  
SEK  
DRAWN  
PMM  
CHECKED  
APPROVED

PRELIMINARY  
SITE LAYOUT  
EAST POINT ENERGY CENTER  
EAST POINT ENERGY CENTER, LLC  
SCHOHARIE CO., NY



REV.  
D

327851-EAST POINT-OPT 2\_C-020.dwg 2019.08.26