

PERMITTING  
NOT FOR CONSTRUCTION



UNDER NEW YORK STATE EDUCATION LAW ARTICLE 145 (ENGINEERING), SECTION 7209 (2), IT IS A VIOLATION OF THE LAW FOR ANY PERSON, UNLESS ACTING UNDER THE DIRECTION OF A LICENSED PROFESSIONAL ENGINEER, TO ALTER THIS DOCUMENT.



249 Western Avenue  
Augusta, ME 04330

PROJECT NO: 327851

REV	DESCRIPTION	DATE	DES	CHK	APP
D	ISSUED FOR PERMITTING	08-30-19	CMW	PMM	
C	ISSUED FOR CLIENT REVIEW	08-22-19	CMW	RAY	
B	ISSUED FOR CLIENT REVIEW	08-02-19	SEK	PMM	
A	ISSUED FOR CLIENT REVIEW	06-20-19	CMW	PMM	

PGT  
DESIGNED  
CMW  
DRAWN  
PMM  
CHECKED  
APPROVED

PRELIMINARY  
OVERALL SITE LAYOUT  
EAST POINT ENERGY CENTER  
EAST POINT ENERGY CENTER, LLC  
SCHOHARIE CO., NY

SHARON

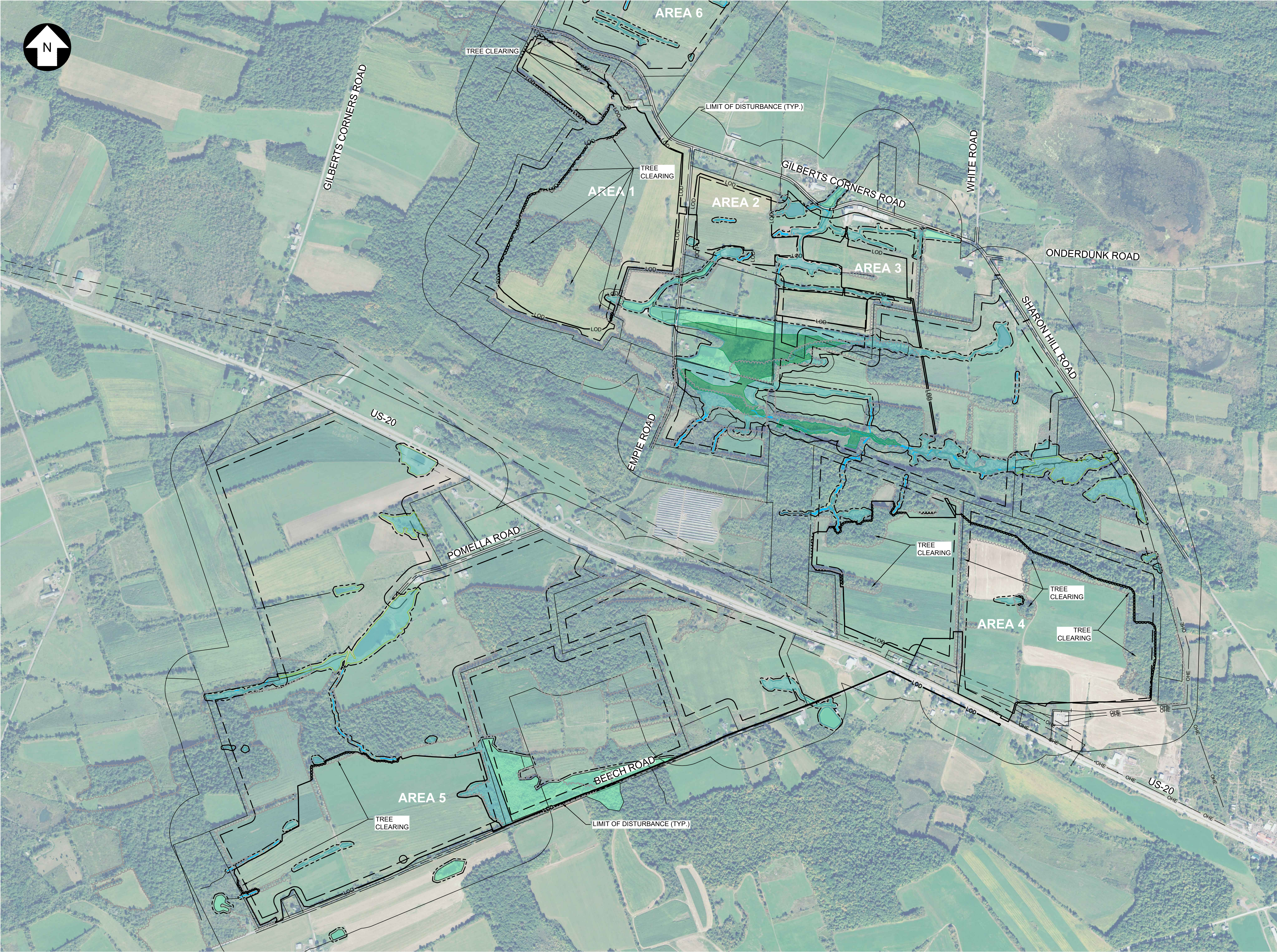
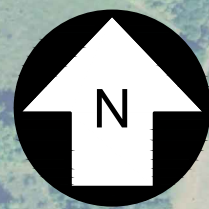


C-001

REV.  
D

327851-EAST POINT-OPT 2\_C-001.dwg 2019.08.28





UNDER NEW YORK STATE EDUCATION LAW ARTICLE 145 (ENGINEERING), SECTION 7209 (2), IT IS A VIOLATION OF THE LAW FOR ANY PERSON, UNLESS ACTING UNDER THE DIRECTION OF A LICENSED PROFESSIONAL ENGINEER, TO ALTER THIS DOCUMENT.

PERMITTING  
NOT FOR CONSTRUCTION



249 Western Avenue  
Augusta, ME 04330

PROJECT NO: 327851

REV	REFERENCE ITEMS	DESCRIPTION	DATE	DES	CHK	APP
D		ISSUED FOR PERMITTING	08-30-19	CMW	PMM	
C		ISSUED FOR CLIENT REVIEW	08-22-19	CMW	RAY	
B		ISSUED FOR CLIENT REVIEW	08-02-19	SEK	PMM	
A		ISSUED FOR CLIENT REVIEW	06-20-19	CMW	PMM	

PGT  
DESIGNED  
CMW  
DRAWN  
RAY  
CHECKED  
APPROVED

PRELIMINARY  
EXISTING CONDITIONS & CLEARING PLAN  
EAST POINT ENERGY CENTER  
EAST POINT ENERGY CENTER, LLC  
SCHOHARIE CO., NY

SHARON

REVIEW 1  
REVIEW 2

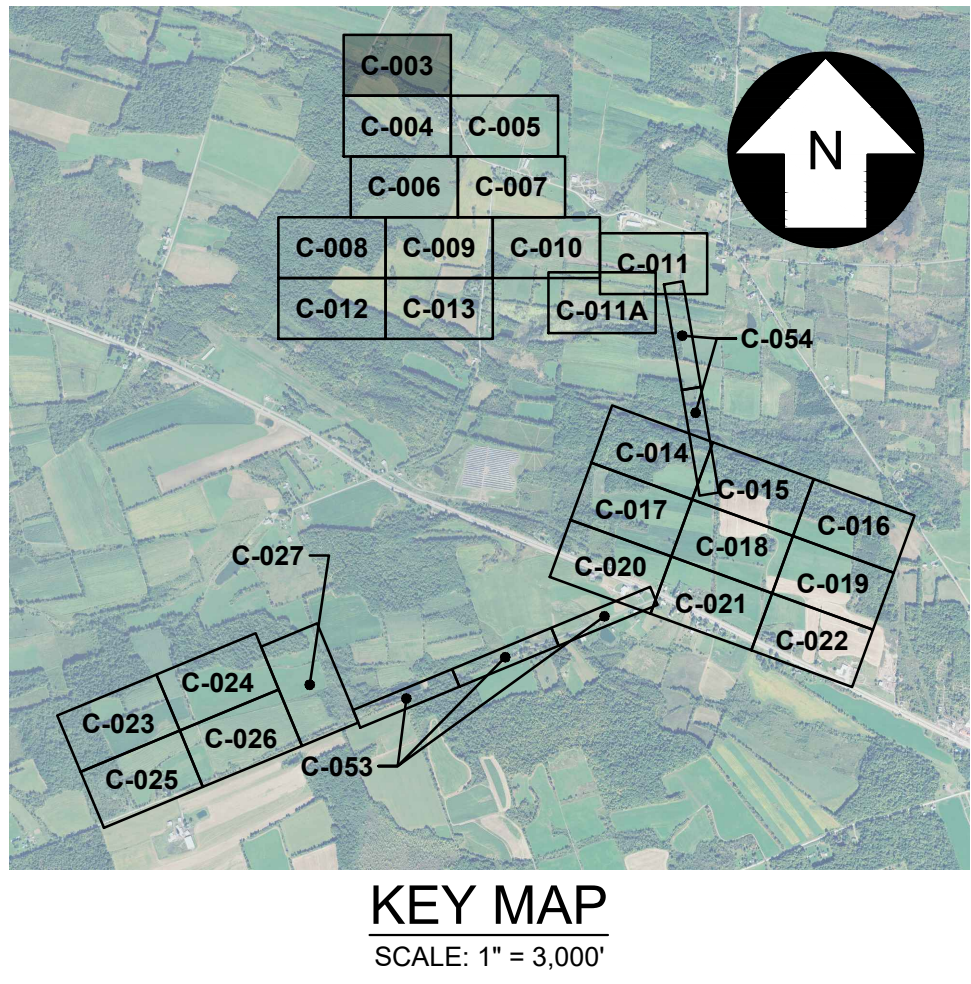
04/08  
DATE  
AS NOTED  
SCALE



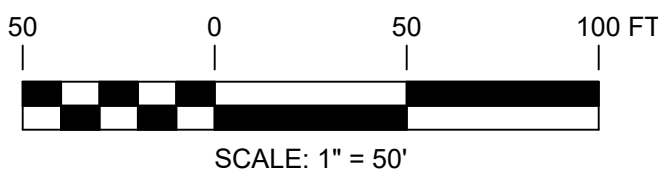
C-002

REV.  
D





FOR CONTINUATION, SEE DRAWING C-004



PERMITTING  
NOT FOR CONSTRUCTION



UNDER NEW YORK STATE EDUCATION LAW ARTICLE 145 (ENGINEERING), SECTION 7209 (2), IT IS A VIOLATION OF THE LAW FOR ANY PERSON, UNLESS ACTING UNDER THE DIRECTION OF A LICENSED PROFESSIONAL ENGINEER, TO ALTER THIS DOCUMENT.

REFERENCE ITEMS	

REV		DESCRIPTION					PROJECT NO: 327851			
REV	DESCRIPTION	DATE	DES	CHK	APP					
D	ISSUED FOR PERMITTING	08-30-19	CMW	PMM						
C	ISSUED FOR CLIENT REVIEW	08-22-19	SEK	RAY						
B	ISSUED FOR CLIENT REVIEW	08-02-19	SEK	PMM						
A	ISSUED FOR CLIENT REVIEW	06-20-19	SEK	PMM						

CMW  
DESIGNED  
SEK  
DRAWN  
PMM  
CHECKED  
APPROVED

PRELIMINARY  
SITE LAYOUT  
EAST POINT ENERGY CENTER  
EAST POINT ENERGY CENTER, LLC  
SCHOHARIE CO., NY

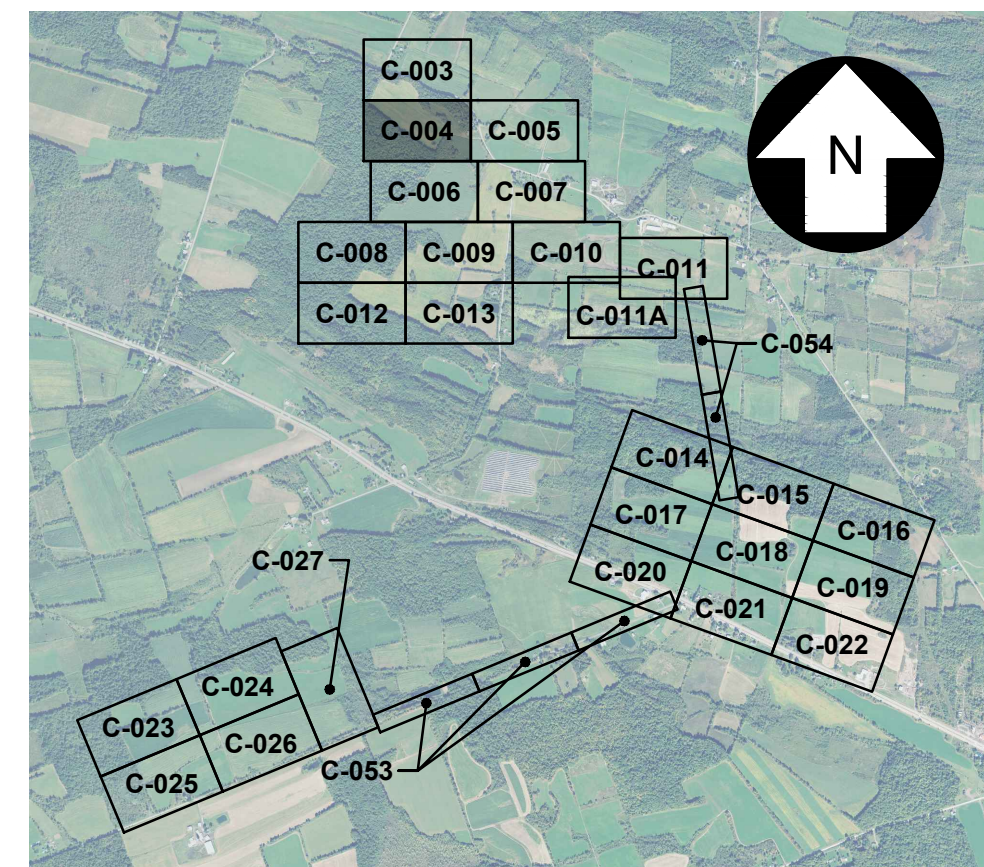


C-003

REV. D




FOR CONTINUATION, SEE DRAWING C-006



**KEY MAP**  
SCALE: 1" = 3,000'


UNDER NEW YORK STATE EDUCATION LAW ARTICLE 145 (ENGINEERING), SECTION 7209 (2), IT IS A VIOLATION OF THE LAW FOR ANY PERSON, UNLESS ACTING UNDER THE DIRECTION OF A LICENSED PROFESSIONAL ENGINEER, TO ALTER THIS DOCUMENT.



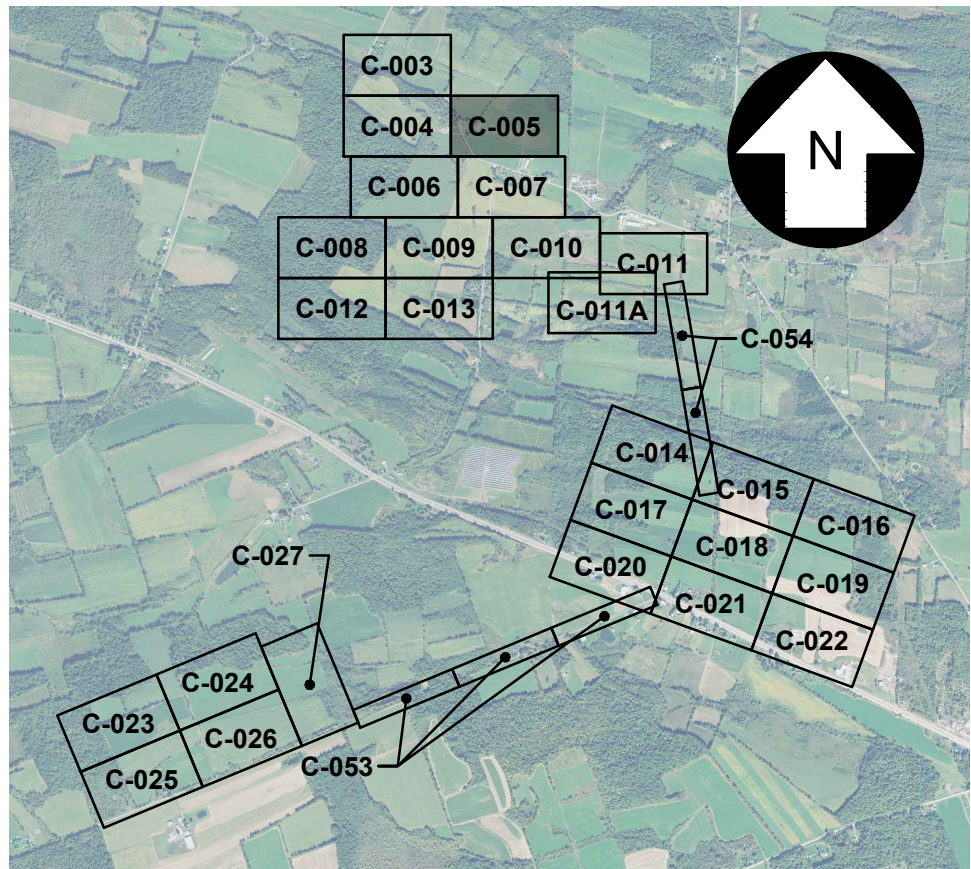
249 Western Avenue  
Augusta, ME 04330

PROJECT NO: 327851

REFERENCE ITEMS		REV	DESCRIPTION	DATE	DES	CHK	APPROVED
		D	ISSUED FOR PERMITTING	08-30-19	CMW	PMM	
		C	ISSUED FOR CLIENT REVIEW	08-22-19	SEK	RAY	
		B	ISSUED FOR CLIENT REVIEW	08-02-19	SEK	PMM	
		A	ISSUED FOR CLIENT REVIEW	06-20-19	SEK	PMM	

<div>CMW DESIGNED</div> <div>SEK DRAWN</div> <div>PMM CHECKED</div> <div>APPROVED</div>	<div>PRELIMINARY</div> <div>SITE LAYOUT</div> <div>EAST POINT ENERGY CENTER</div> <div>EAST POINT ENERGY CENTER, LLC</div> <div>SHARON</div> <div>SCHOHARIE CO., NY</div>		
<div>REVIEW 1</div> <div>REVIEW 2</div>	<div>04/08 DATE</div> <div>AS NOTED</div>		<div>REV. D</div> <div>C-004</div>





KEY MAP  
SCALE: 1" = 3,000'

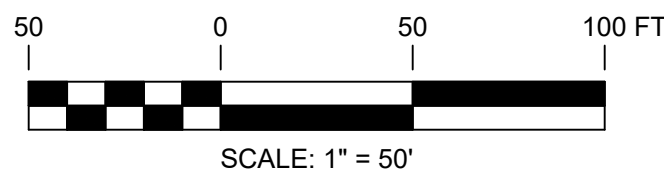


N/F  
JOHN M. PAPP AND  
KIM PAPP  
TAX NO. 6-3-3.2

N/F  
CHARLES ROSNER AND  
FRANCES ROSNER  
TAX NO. 6-3-2

FOR CONTINUATION, SEE DRAWING C-004

FOR CONTINUATION, SEE DRAWING C-007



PERMITTING  
NOT FOR CONSTRUCTION



UNDER NEW YORK STATE EDUCATION LAW ARTICLE 145 (ENGINEERING), SECTION 7209 (2), IT IS A VIOLATION OF THE LAW FOR ANY PERSON, UNLESS ACTING UNDER THE DIRECTION OF A LICENSED PROFESSIONAL ENGINEER, TO ALTER THIS DOCUMENT.

REFERENCE ITEMS	

REV		DESCRIPTION					PROJECT NO: 327851			
REV	DESCRIPTION	DATE	DES	CHK	APP					
D	ISSUED FOR PERMITTING	08-30-19	CMW	PMM						
C	ISSUED FOR CLIENT REVIEW	08-22-19	SEK	RAY						
B	ISSUED FOR CLIENT REVIEW	07-31-19	SEK	PMM						
A	ISSUED FOR CLIENT REVIEW	06-20-19	SEK	PMM						

CMW  
DESIGNED  
SEK  
DRAWN  
PMM  
CHECKED  
APPROVED

PRELIMINARY  
SITE LAYOUT  
EAST POINT ENERGY CENTER  
EAST POINT ENERGY CENTER, LLC  
SCHOHARIE CO., NY

SHARON

REVIEW 1  
DATE  
REVIEW 2  
SCALE

04/08  
DATE  
AS NOTED  
SCALE

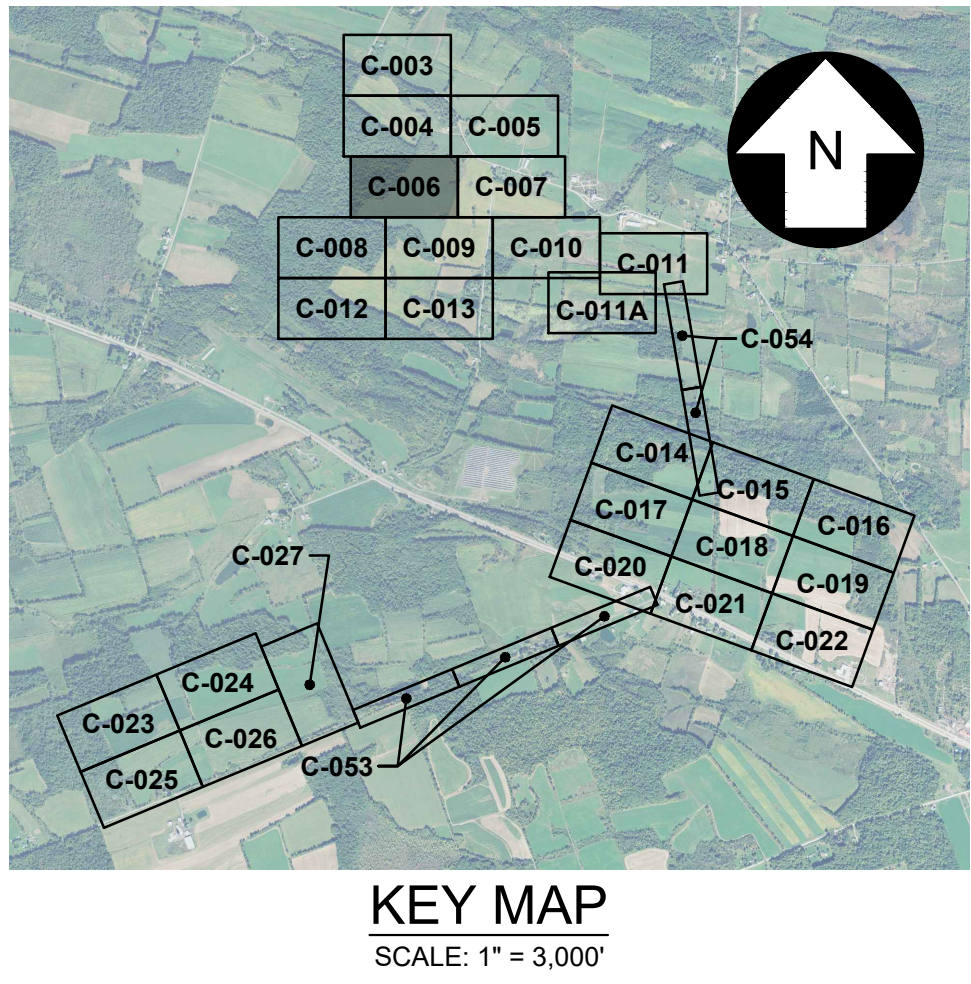


C-005

REV.  
D

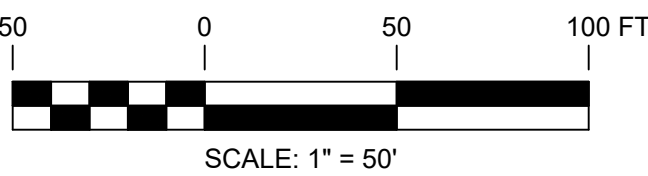


FOR CONTINUATION, SEE DRAWING C-004



FOR CONTINUATION, SEE DRAWING C-008

FOR CONTINUATION, SEE DRAWING C-009



PERMITTING  
NOT FOR CONSTRUCTION



UNDER NEW YORK STATE EDUCATION LAW ARTICLE 145 (ENGINEERING), SECTION 7209 (2), IT IS A VIOLATION OF THE LAW FOR ANY PERSON, UNLESS ACTING UNDER THE DIRECTION OF A LICENSED PROFESSIONAL ENGINEER, TO ALTER THIS DOCUMENT.

REFERENCE ITEMS		PROJECT NO: 327851					
REV	DESCRIPTION	DATE	DES	CHK	APP		
D	ISSUED FOR PERMITTING	08-30-19	CMW	PMM			
C	ISSUED FOR CLIENT REVIEW	08-22-19	SEK	RAY			
B	ISSUED FOR CLIENT REVIEW	08-02-19	SEK	PMM			
A	ISSUED FOR CLIENT REVIEW	06-20-19	SEK	PMM			

CMW  
DESIGNED  
SEK  
DRAWN  
PMM  
CHECKED  
APPROVED

PRELIMINARY  
SITE LAYOUT  
EAST POINT ENERGY CENTER  
EAST POINT ENERGY CENTER, LLC  
SCHOHARIE CO., NY

SHARON



C-006

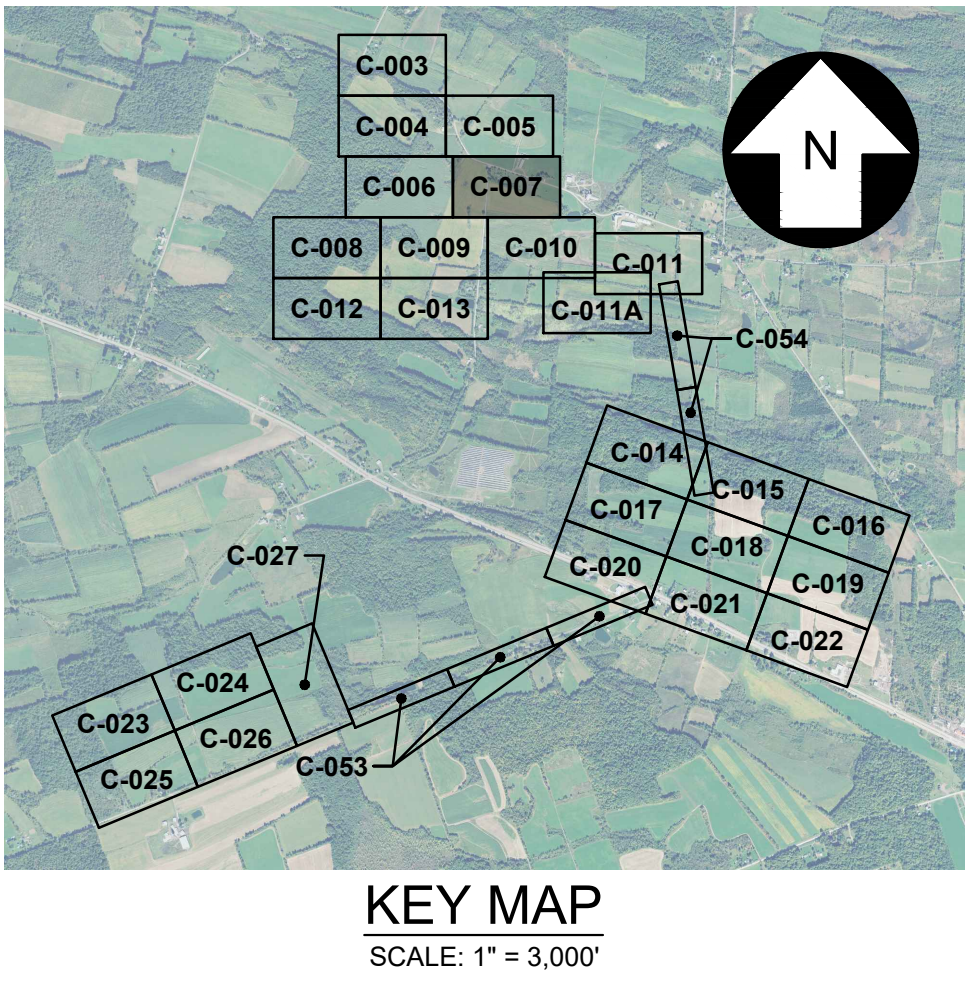
REV.  
D

04/08  
DATE  
AS NOTED  
SCALE

327851-EAST POINT-OPT 2\_C-006.dwg 2019.08.26

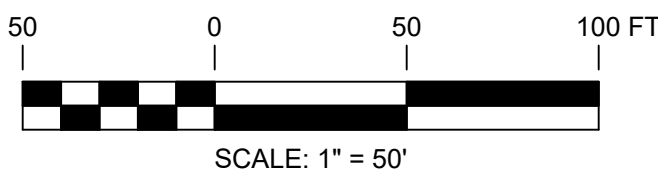


FOR CONTINUATION, SEE DRAWING C-006



FOR CONTINUATION, SEE DRAWING C-009

FOR CONTINUATION, SEE DRAWING C-010



PERMITTING  
NOT FOR CONSTRUCTION



UNDER NEW YORK STATE EDUCATION LAW ARTICLE 145 (ENGINEERING), SECTION 7209 (2), IT IS A VIOLATION OF THE LAW FOR ANY PERSON, UNLESS ACTING UNDER THE DIRECTION OF A LICENSED PROFESSIONAL ENGINEER, TO ALTER THIS DOCUMENT.



249 Western Avenue  
Augusta, ME 04330

PROJECT NO: 327851

REV	DESCRIPTION	DATE	DES	CHK	APP
D	ISSUED FOR PERMITTING	08-30-19	CMW	PMM	
C	ISSUED FOR CLIENT REVIEW	08-22-19	SEK	RAY	
B	ISSUED FOR CLIENT REVIEW	08-02-19	SEK	PMM	
A	ISSUED FOR CLIENT REVIEW	06-20-19	SEK	PMM	

CMW  
DESIGNED  
SEK  
DRAWN  
PMM  
CHECKED  
APPROVED

PRELIMINARY  
SITE LAYOUT  
EAST POINT ENERGY CENTER  
EAST POINT ENERGY CENTER, LLC  
SCHOHARIE CO., NY

SHARON

REVIEW 1  
DATE  
REVIEW 2  
SCALE

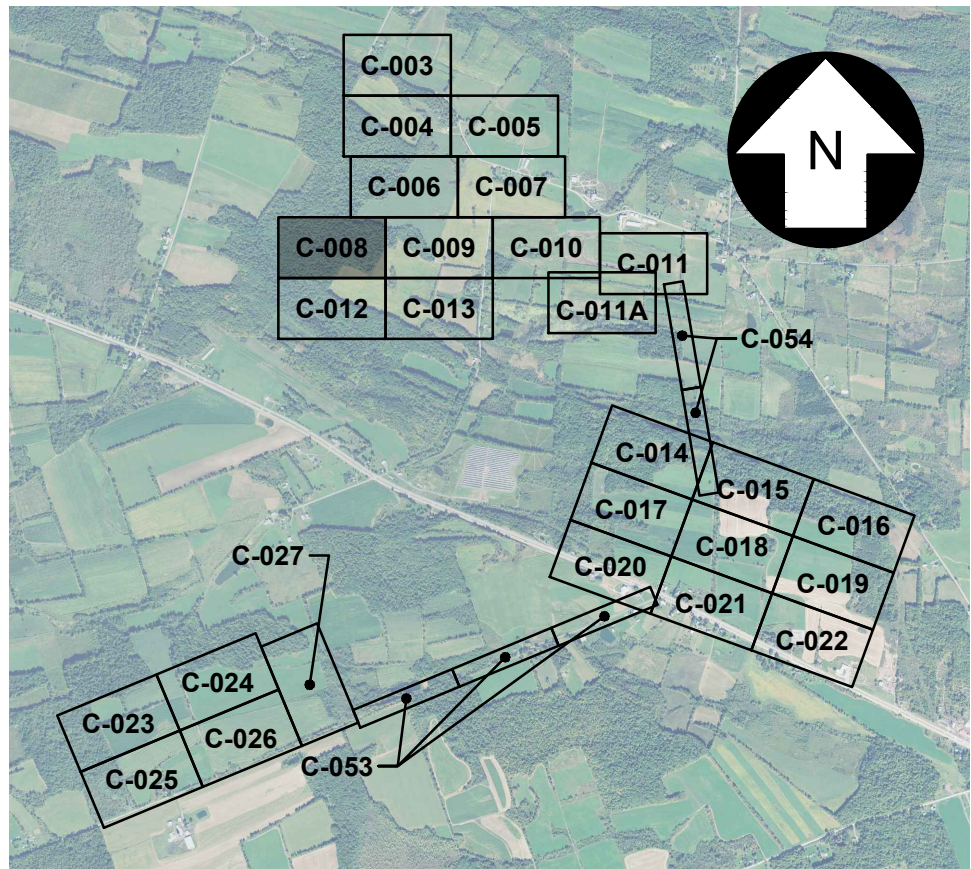
04/08  
AS NOTED



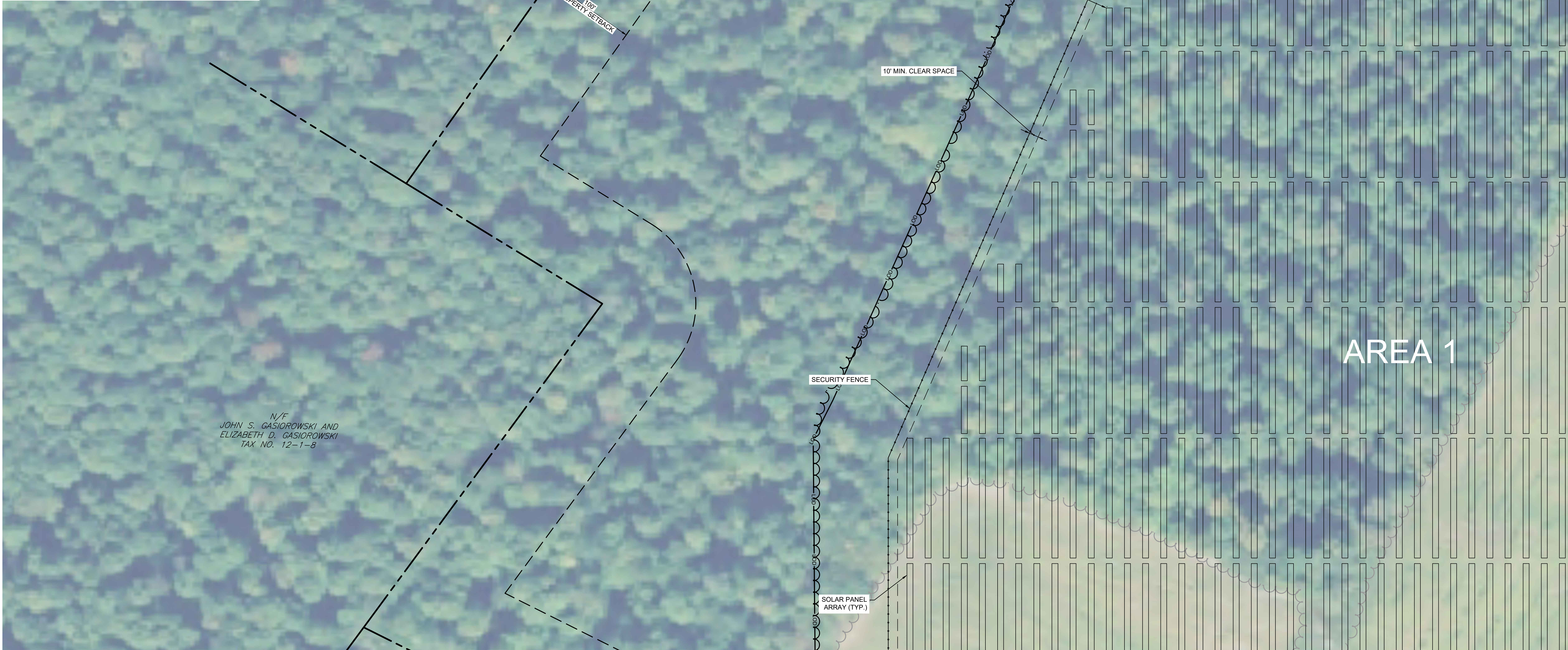
C-007

REV.  
D

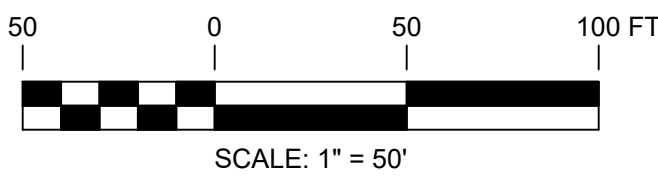




KEY MAP  
SCALE: 1" = 3,000'



FOR CONTINUATION, SEE DRAWING C-012



PERMITTING  
NOT FOR CONSTRUCTION



UNDER NEW YORK STATE EDUCATION LAW ARTICLE 145 (ENGINEERING), SECTION 7209 (2), IT IS A VIOLATION OF THE LAW FOR ANY PERSON, UNLESS ACTING UNDER THE DIRECTION OF A LICENSED PROFESSIONAL ENGINEER, TO ALTER THIS DOCUMENT.

REFERENCE ITEMS		REV	DESCRIPTION	DATE	DES	CHK	APP
		D	ISSUED FOR PERMITTING	08-30-19	CMW	PMM	
		C	ISSUED FOR CLIENT REVIEW	08-22-19	SEK	RAY	
		B	ISSUED FOR CLIENT REVIEW	08-02-19	SEK	PMM	
		A	ISSUED FOR CLIENT REVIEW	06-20-19	SEK	PMM	



249 Western Avenue  
Augusta, ME 04330

PROJECT NO: 327851

CMW  
DESIGNED  
SEK  
DRAWN  
PMM  
CHECKED  
APPROVED

PRELIMINARY  
SITE LAYOUT  
EAST POINT ENERGY CENTER  
EAST POINT ENERGY CENTER, LLC  
SCHOHARIE CO., NY

SHARON

REVIEW 1  
DATE  
REVIEW 2  
SCALE

04/08  
AS NOTED



REV.  
D

C-008

327851-EAST POINT-OPT 2\_C-008.dwg 2019.08.30



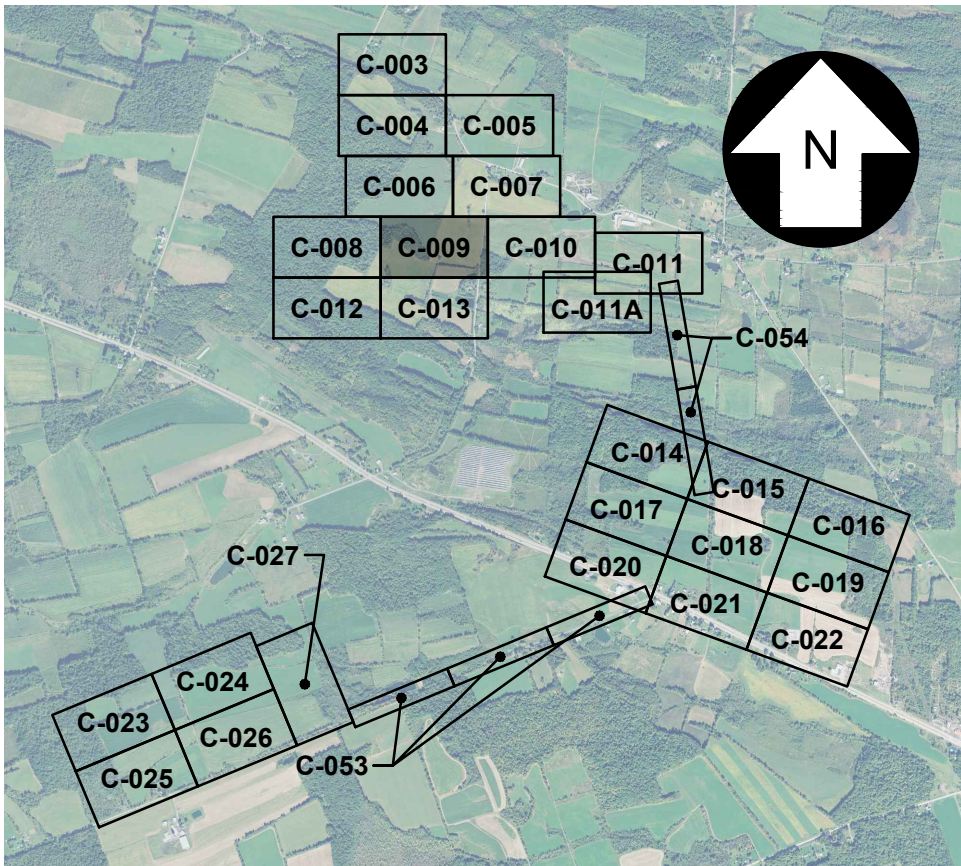
FOR CONTINUATION, SEE DRAWING C-008

FOR CONTINUATION, SEE DRAWING C-006

FOR CONTINUATION, SEE DRAWING C-007

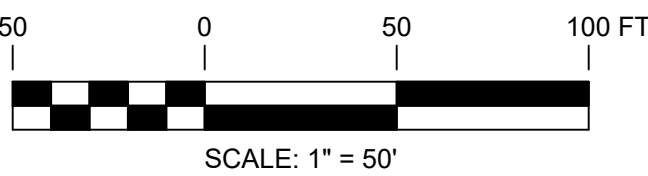


FOR CONTINUATION, SEE DRAWING C-010



KEY MAP  
SCALE: 1" = 3,000'

FOR CONTINUATION, SEE DRAWING C-013



PERMITTING  
NOT FOR CONSTRUCTION



UNDER NEW YORK STATE EDUCATION LAW ARTICLE 145 (ENGINEERING), SECTION 7209 (2), IT IS A VIOLATION OF THE LAW FOR ANY PERSON, UNLESS ACTING UNDER THE DIRECTION OF A LICENSED PROFESSIONAL ENGINEER, TO ALTER THIS DOCUMENT.

REFERENCE ITEMS		PROJECT NO: 327851					
REV	DESCRIPTION	DATE	DES	CHK	APP		
D	ISSUED FOR PERMITTING	08-30-19	CMW	PMM			
C	ISSUED FOR CLIENT REVIEW	08-22-19	SEK	RAY			
B	ISSUED FOR CLIENT REVIEW	08-02-19	SEK	PMM			
A	ISSUED FOR CLIENT REVIEW	06-20-19	SEK	PMM			

CMW  
DESIGNED  
SEK  
DRAWN  
PMM  
CHECKED  
APPROVED

PRELIMINARY  
SITE LAYOUT  
EAST POINT ENERGY CENTER  
EAST POINT ENERGY CENTER, LLC  
SCHOHARIE CO., NY



REV.  
D